



- 12=1/4 LOCK NUTS-A
- 2=5/16 LOCK NUTS-B
- 2=7/16 LOCK NUTS-C
- 4=1/4 USS WASHERS-D
- 12=1/4 SAE WASHERS-E
- 4=5/16 SAE WASHERS-F
- 4=1/4X1 BOLTS-G
- 4=7/16 SAE WASHERS-H
- 2=7/16X2 1/4 BOLTS-I
- 1=ALUMI. FLAT WASHER WITH TWO SLOTS-J
- 2=5/16X1 1/4 BOLTS-K
- 4=1/4X1 1/16 SQ U-BOLTS-L
- 12=1/4 ROD CAPS-M
- 2=3/16X1 1/4X7/8 ROUND CLIPS-N
- 2=1" PLUGS-O
- 1=GR-BRK1-P
- 2=FGH CLIPS&BRACKETS -Q

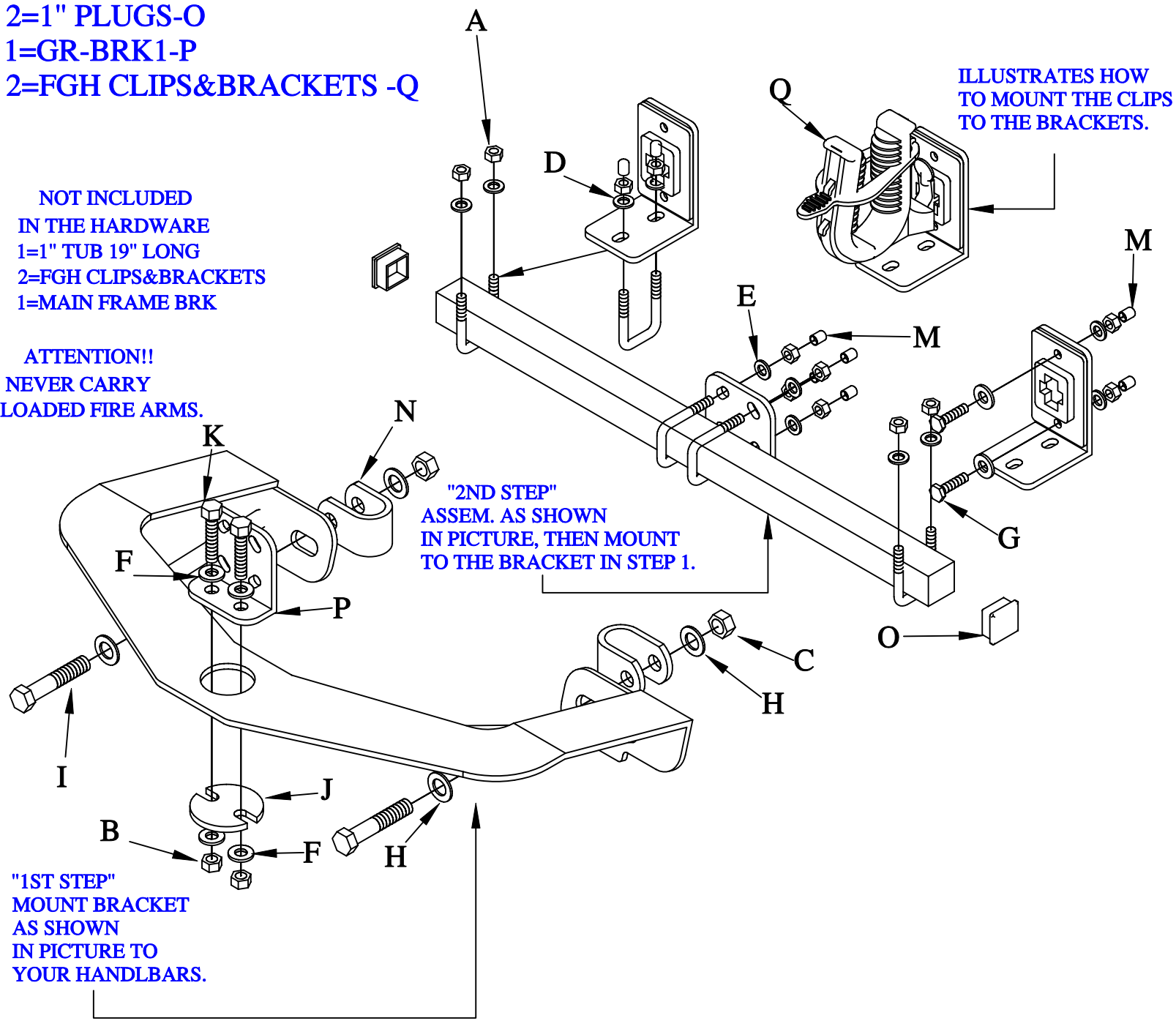
#BR106

DOUBLES AS A GUN RACK&BOW RACK.

FIT ALL MODELS WITH LARGE HEADLIGHTS MOUNTED ON THE HANDLEBARS (EXAMPLES) HONDA'S 400,450S 450ES 4X4.

NOT INCLUDED IN THE HARDWARE
 1=1" TUB 19" LONG
 2=FGH CLIPS&BRACKETS
 1=MAIN FRAME BRK

ATTENTION!!
 NEVER CARRY LOADED FIRE ARMS.



"2ND STEP"
 ASSEM. AS SHOWN
 IN PICTURE, THEN MOUNT
 TO THE BRACKET IN STEP 1.

"1ST STEP"
 MOUNT BRACKET
 AS SHOWN
 IN PICTURE TO
 YOUR HANDLEBARS.

ILLUSTRATES HOW
 TO MOUNT THE CLIPS
 TO THE BRACKETS.