

2=5/16X1 BOLTS  
 4=5/16 X 1 1/2 UBOLTS  
 2=1/4 X 1/2 UBOLTS  
 22=5/16 USS WASHERS  
 20=5/16 LOCK NUTS  
 4=1/4 USS WASHERS  
 4=1/4 LOCK NUTS  
 10=5/16 X1 CARRIAGE HEAD BOLTS(WRINKLE)



## # BG-49W

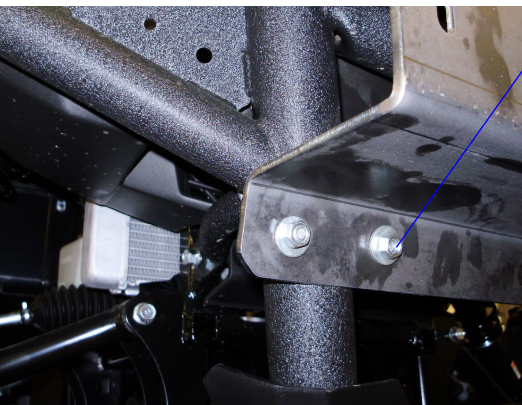
YAMAHA VIKING 700 4X4 FRONT BUMPER



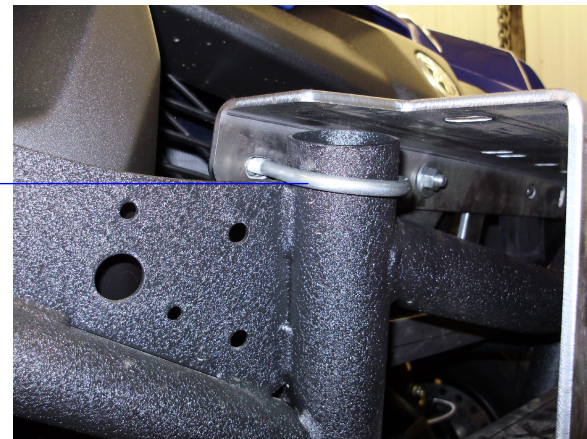
1ST REMOVE FOUR LARGE BOLTS HOLING FRONT BUMPER TO FRAME. TILT FORWARD TO ACCESS THE SCREWS AND BOLTS HOLDING THESE PLASTIC GUARDS. REMOVE THE GUARDS WILL NOT REUSE THESE. MOUNT THE BUMPER BACK TO FRAME. YOU CAN BOLT THE FENDER BACK TO BUMPER WITH SMALL BOLTS. (NOT SUPPLIED)



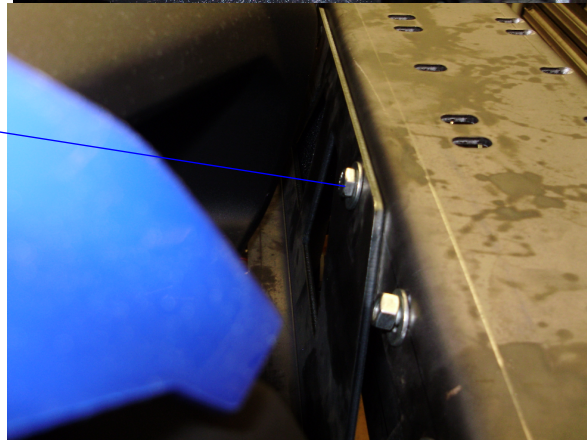
2ND PLACE MAIN BRACKET ON TOP OF TUBES. CENTER THE BRACKET.



3RD SLIDE THE LARGE 5/16 U BOLTS AROUND TUBE ON TOP AND BOTTOM LEAVE LOOSE UNTIL ALL HARDWARE IS IN PLACE. USE THE 5/16 LOCK NUTS AND WASHERS HERE ALSO.



4TH SLIDE BACK SUPPORT PLATE INTO PLACE. USE THE 5/16X1 BOLTS WASHERS AND LOCK NUTS ON TOP. USE THE 1/4X1/2 UBOLTS 1/4 WASHERS AND LOCK NUTS FOR BOTTOM. CENTER BOTH AND TIGHTEN ALL HARDWARE.



LAST STEP SLIDE MAIN BUMPER OVER BRACKETS LINE HOLES UP WITH SUB BRACKETS. USE THE PAINTED CARRIAGE HEAD BOLTS 5/16 WASHERS AND LOCK NUTS TO FASTEN TOGETHER. USE SAME HARDWARE TO MOUNT ROLL BAR. PIC IS OF A POLARIS BUT MOUNTING IS THE SAME FOR BOTH MODELS.

