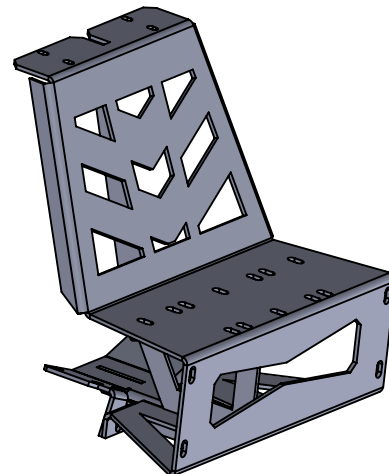


2=5/16X1 1/4 U-BOLTS  
 4=5/16X1 BOLTS  
 22=5/16 USS WASHERS  
 18=5/16 LOCK NUTS  
 4=1/4 USS WASHERS  
 4=1/4 LOCK NUTS  
 2=1/4X1/2 U-BOLTS  
 10=5/16X1 CARRIAGE HEAD BOLTS



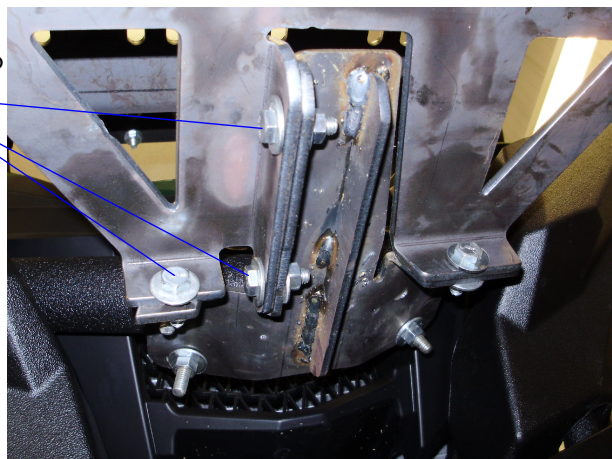
# BG-53W  
 YAMAHA GRIZZLY 700 4X4

LEAVE ALL HARDWARE  
 LOOSE UNTIL ALL  
 BRACKETS ARE INSTALLED  
 AND CENTERED.



1ST STEP: MOUNT THE T BRACKET TO THE FRONT  
 BUMPER. USE THE 5/16 X 1/4 U-BOLTS 5/16  
 WASHERS AND 5/16 LOCK NUTS.

2 STEP: INSTALL THE 5/16X1 BOLTS 5/16 USS WASHERS AND 5/16  
 LOCK NUTS INTO THE OVAL HOLES ON BOTH BRACKETS.



TUBING ROLL BAR WILL MOUNT ONTOP OF THE BUMPER  
 AFTER ALL BRACKETS AND BUMPER COVER ARE  
 INSTALLED. USE FOUR OF THE CARRIAGE HEAD BOLTS  
 WITH WASHERS AND LOCK NUTS TO MOUNT THE BAR TO  
 BUMPER COVER.

LAST STEP: MOUNT THE TOP OF THE LARGE BRACKET TO  
 THE RACK USE THE 1/4X1/2 U-BOLTS 1/4 USS WASHERS  
 AND 1/4 LOCK NUTS HERE. ONCE BRACKETS ARE  
 CENTERED, TIGHTEN ALL HARDWARE. LAST SLIDE THE  
 BUMPER COVER OVER THE BRACKETS AND SECURE IT  
 TO THE BRACKETS WITH THE CARRIAGE HEAD BOLTS  
 5/16 USS WASHERS AND 5/16 LOCK NUTS.

5/16X1 CARRIAGE HEAD BOLTS HERE.

