

4=5/16 X 1 1/4 U-BOLTS  
18=5/16 USS WASHERS  
18=5/16 LOCK NUTS  
10=5/16 X 1 CARRIAGE HEAD BOLTS

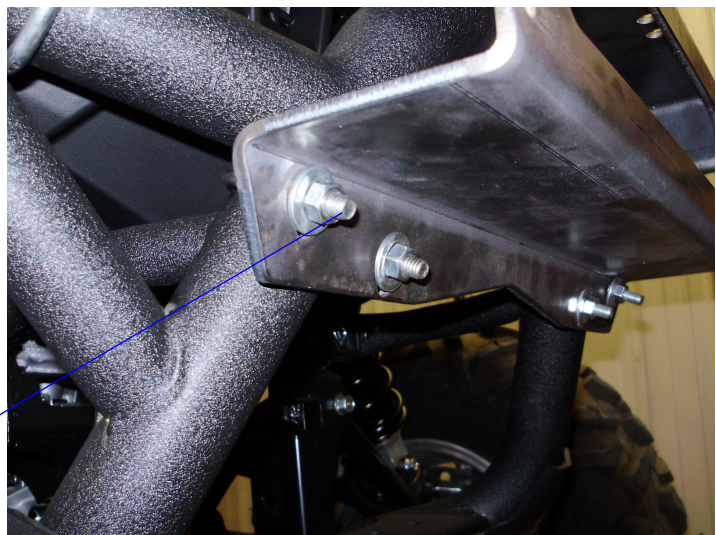


## # BG-54W YAMAHA WOLVERINE 700 4X4

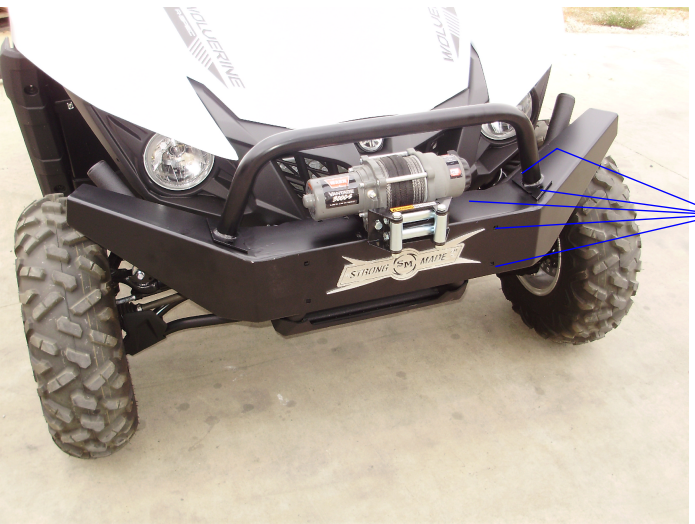
1ST STEP: PLACE THE MAIN BRACKET ONTO THE FRONT BUMPER. CENTER THE BRACKET.



2ND STEP: PLACE THE U-BOLTS AROUND THE BUMPER PIPE AND THROUGH THE OVAL HOLES ON THE TOP OF THE BRACKET. PLACE WASHERS AND LOCK NUTS ONTO THREADS LEAVE LOOSE UNTIL ALL HARDWARE HAS BEEN PLACED IN CORRECT LOCATIONS.



PLACE THE U-BOLTS AROUND THE BUMPER PIPE AND THROUGH THE OVAL HOLES ON THE BOTTOM OF THE BRACKET. PLACE WASHERS AND LOCK NUTS ONTO THREADS LEAVE LOOSE UNTIL ALL HARDWARE HAS BEEN PLACED IN CORRECT LOCATIONS.



LAST STEP: SLIDE BUMPER COVER OVER MAIN BRACKET AND SECURE IT TO MAIN BRACKET. USE THE CARRIAGE HEAD BOLTS WITH WASHERS AND LOCK NUTS. THE GRAB BAR WILL ALSO USE THE CARRIAGE HEAD BOLTS WITH WASHERS AND LOCK NUTS. TIGHTEN ALL HARDWARE THAT WAS LEFT LOOSE EARLIER.

WINCH SHOULD HAVE ITS OWN MOUNTING HARDWARE TO MOUNT TO THE BUMPER.