

2=5/16X1 1/4 U-BOLTS  
16=5/16 LOCK NUTS  
18=5/16 USS WASHERS  
4=5/16 ROD CAPS  
10=5/16X1 CARRIAGE HEAD BOLTS PAINTED  
2=5/16X1 BOLTS



# # BG-55W

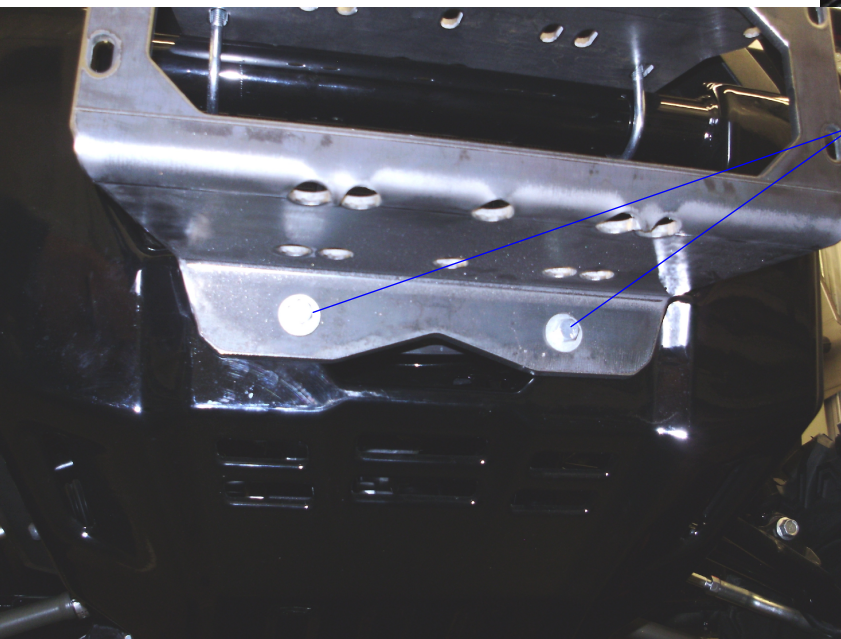
HONDA PIONEER 1000 FRONT BUMPER

INSTALL ALL HARDWARE AND LEAVE LOOSE UNTIL BRACKET IS CENTERED AND IN PLACE. THEN PROCEED TO TIGHTEN ALL HARDWARE.

1ST PLACE THE BRACKET UP AGAINST THE STOCK BUMPER. SLIDE U-BOLTS AROUND THE PIPE AND UP THROUGH THE OVAL HOLES OF BRACKET. SECURE WITH 5/16 USS WASHERS AND 5/16 LOCK NUTS. ONCE TIGHTENED PLACE ROD CAPS OVER EXISTING THREADS.



USE THE 5/16X1 BOLTS WITH 5/16 USS WASHERS AND 5/16 LOCK NUTS HERE.



LAST SLIDE THE BUMPER COVER OVER THE BRACKET. USE THE 5/16 CARRIAGE HEAD BOLTS AND 5/16 USS WASHERS WITH 5/16 LOCK NUTS TO MOUNT TO THE BRACKET. PLACE ONE IN EACH OF THE SIX SQUARE HOLES. THE WINCH WILL COME WITH ITS OWN HARDWARE TO MOUNT TO THE BUMPER.

