

6=1/4X1/2 U-BOLTS  
 12=1/4 LOCK NUTS  
 12=1/4 USS WASHERS  
 4=5/16X1 1/4 CARRIAGE HEAD BOLTS  
 6=5/16X1 CARRIAGE HEAD BOLTS  
 10=5/16 LOCK NUTS  
 10=5/16 USS WASHERS  
 12=1/4 ROD CAPS

PLACE CAPS ON ALL EXISTING 1/4 THREADS ON ALL U-BOLTS.



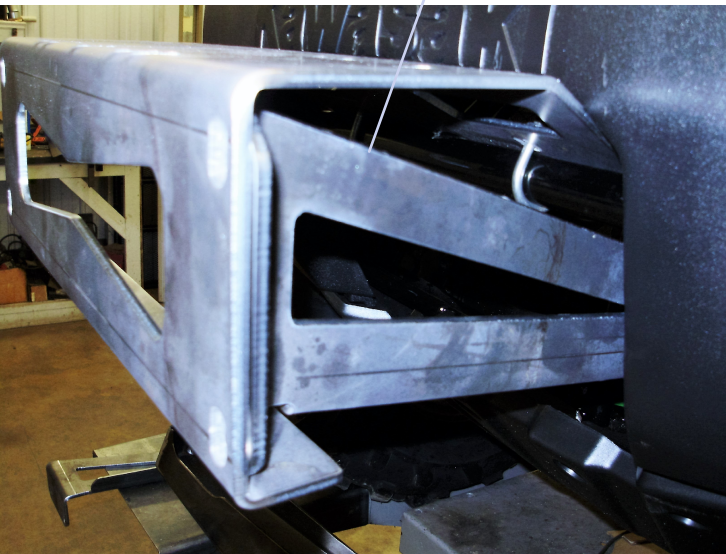
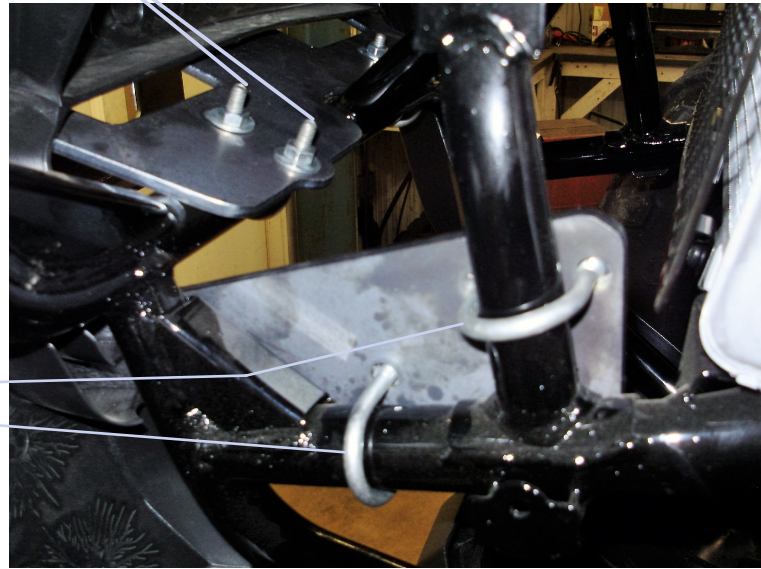
## # BG-56W

KAWASAKI BRUTE FORCE 750

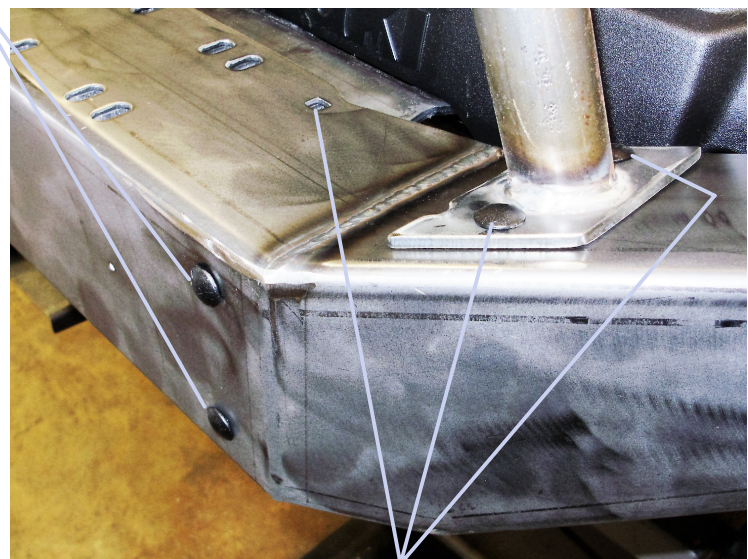
1:ST SLIDE THE MAIN BRACKET INTO THE HOLE ON FRONT BUMPER COVER. PUSH IT UP TILL IT TOUCHES THE PLASTIC BUMPER COVER. USE TWO U BOLTS WITH WASHERS AND LOCK NUTS. LEAVE LOOSE UNTIL ALL HARDWARE IS INSTALLED.



2:ND INSERT THE SIDE BRACKETS INTO THE FRAME THERE IS A RIGHT AND LEFT SIDE TO THESE. SECURE THESE TO THE FACTORY FRAME WITH TWO U-BOLTS WITH WASHERS AND LOCK NUTS. AGAIN LEAVE LOOSE.



LAST ONCE BUMPER BRACKETS ARE IN PLACE SLIDE THE BUMPER COVER OVER THE BRACKETS AND INSERT THE 5/16X1 1/4 CARRIAGE HEAD BOLTS THROUGH THE FRONT INTO ALL PLATES SECURE WITH 5/16 USS AND 5/16 LOCK NUTS.



USE THE 5/16X1 CARRIAGE HEAD BOLTS HERE TO FINISH THE MOUNTING. THEN PROCEED TO TIGHTEN ALL HARDWARE.

