

6=5/16X1 CARRIAGE HEAD BOLTS-A
 4=5/16X1 1/4 CARRIAGE HEAD BOLTS-B
 10=5/16 LOCK NUTS-C
 2=SPACER #6-D
 8=1/4 LOCK NUTS-E
 2=8MMX30MM BOLTS-F
 8=1/4 LOCK NUTS-G
 4=1/4X1 YELLOW U-BOLTS-H
 8=1/4 USS WASHERS-I
 12=5/16USS WASHERS-J
 8=1/4 ROD CAPS

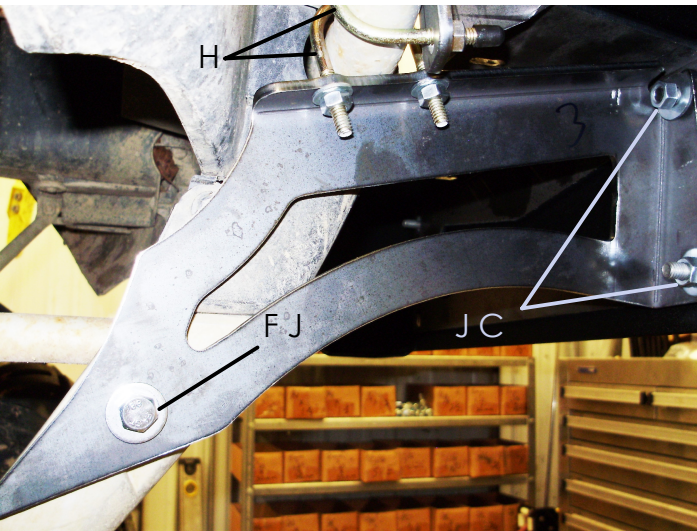


BG-58W

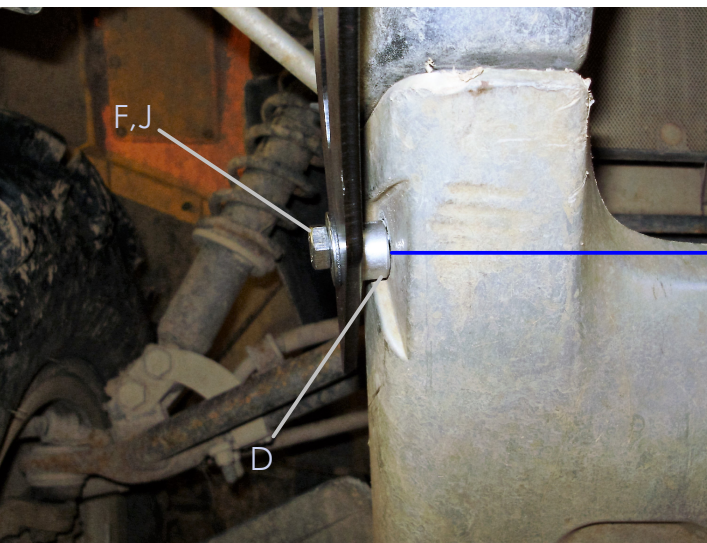
LEAVE ALL HARDWARE LOOSE UNTIL ALL BRACKETS AND PARTS ARE INSTALLED IN CORRECT LOCATIONS THEN PROCEED TO TIGHTEN ALL HARDWARE.

HONDA 500 FOREMAN & RUBICON 500
 REFER TO PRICE LIST FOR MODELS

1: STEP PLACE THE THE SIDE BRACKETS INTO PLACE THERE WILL BE A RIGHT AND LEFT SIDE. USE U-BOLT AND 1/4 WASHERS AND 1/4 LOCK NUTS. USE A 8MM BOLT ON THE BOTTOM WITH A 5/16 USS WASHERS WITH A SPACER.



2: STEP PLACE THE THE TOP MAIN BRACKET SECURE IS ALSO WITH THE U-BOLTS WASHERS AND LOCK NUTS, DO THIS FOR BOTH SIDES OF THE BRACKET.



DON'T FORGET TO PLACE THE SPACERS HERE FOR THE LEFT AND RIGHT SIDE WHEN ASSEMBLING ALL BRACKETS.

PLACE THE 1/4 ROD CAPS ON ALL 1/4" EXISTING THREADS AFTER ALL HARDWARE IS TIGHTENED.



LAST SLIDE THE MAIN BUMPER COVER ON AND INSERT THE 1" AND 1 1/4 LONG CARRIAGE HEADS INTO THE SQUARE HOLES. THEN PROCEED TO TIGHTEN ALL HARDWARE.