

- 4=7/16" LOCK NUTS
- 8=7/16" SAE WASHERS
- 4=7/16" X 1 1/4 BOLTS
- 2= 1/2" X 1 WING HEAD THUMB SCREW
- 2= 1/2" LOCK WASHERS
- 2=8MMX1.25X30 BOLTS
- 1=8MM LOCK NUT
- 2=5/16 USS WASHERS
- 1=L SHAPED BLACK BRACKET



# # RBG-19

YAMAHA RHINO 660 4X4 REAR BUMPER.

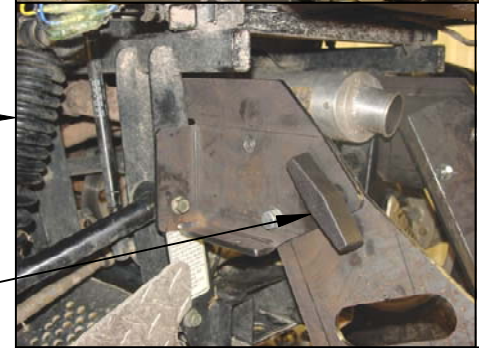
FIRST STEP IS TO MOUNT THE BRACKETS TO THE FRAME OF THE UNIT. FOR BEST RESULTS ONCE MOUNTED MAKE SURE THE BRACKETS ARE LEVEL AS THE PIC. ILLUSTRATES. THERE IS A RIGHT AND A LEFT BRACKET WHEN MOUNTING THEM TO THE UNIT.



SECOND STEP IS TO MOUNT THE BRACKETS TO THE FRAME OF THE UNIT. FOR BEST RESULTS ONCE MOUNTED MAKE SURE THE BRACKETS ARE LEVEL AS THE PIC. ILLUSTRATES.



ONCE THE BUMPER HAS BEEN MOUNTED YOU SHOULD BE ABLE TO ROTATE THE BUMPER DOWN TO RAISE THE DUMP BEND. THE BUMPER CAN STAY IN THAT POSITION AS LONG AS THE WING SCREWS ARE SECURE.



THERE WILL BE A LARGE WINGED SCREW THAT WILL BE USED HERE PLACE THE 1/2 LOCK WASHER OVER THE TREADS THEN SECURE THE PLATES TOTHER.

USE THE 7/16 X 1 1/4 BOLTS 7/16 WASHERS AND 7/16 LOCK NUTS TO MOUNT THE PLATES TO THE FRAME.



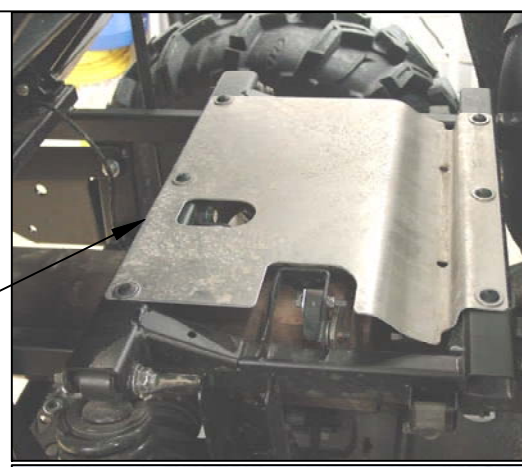
USE THE ORIGINAL A-ARM BOLTS TO MOUNT THE BOTTOM OF THE BRACKET TO THE FRAME.

THIS IS WHAT THE BUMPER SHOULD LOOK LIKE ONCE IT IS IN ITS UP POSITION.

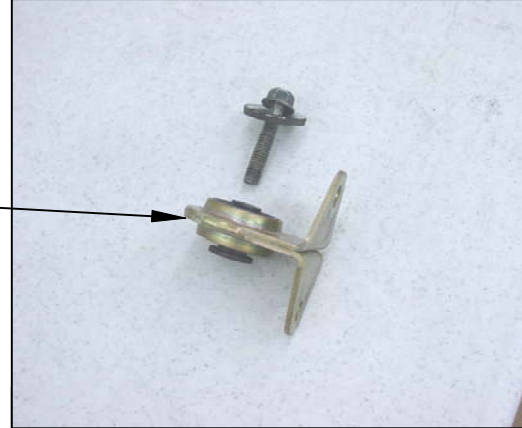


**THIS SHEET IS ONLY FOR THE 04-07 MODELS.**

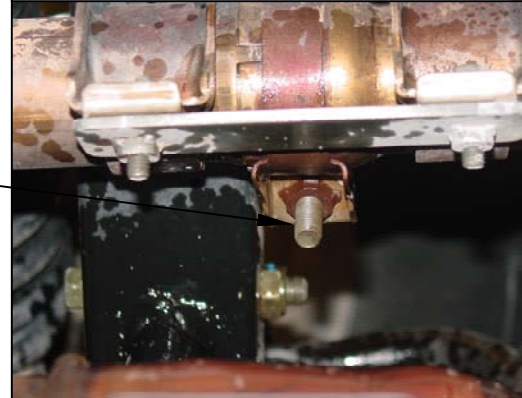
LIFT THE BED OF THE UNIT AND REMOVE THIS HEAT SHIELD TO INSTALL THE TOP MUFFLER MOUNT. AFTER YOU HAVE COMPLETED ALL STEPS. THIS SHIELD WILL HAVE TO BE REINSTALLED.



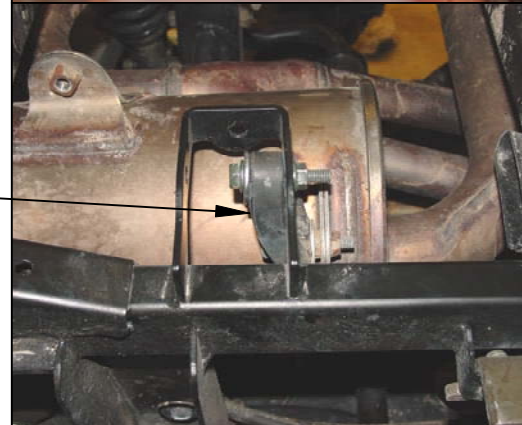
REMOVE THE GOLD TOP MUFFLER MOUNT TO INSTALL THE BLACK SOLID MOUNT THAT IS SUPPLIED WITH THE HARDWARE. THERE ARE 2= 8MM X 1.25 X 30MM BOLTS , 1=8MM LOCK NUT AND 2=5/16 USS WASHERS THAT ARE USED TO MOUNT THE NEW BRACKET.



THERE IS A CLAMP ON THE END OF THE MUFFLER PIPE, THIS WILL NEED TO BE LOOSENED TO MAKE THE MOUNTING OF THE BLACK BRACKET EASIER TO INSTALL.



THE REAR OF THE MUFFLER HAS A RUBBER STRAP THAT IS USED AS A SUPPORT. REMOVE THE TOP BOLT AND MOUNT THE STRAP ON THE THE BACK SIDE OF THE BRACKET LIKE THE PIC. IS SHOWING.



THE LAST STEP IS TO INSTALL THE NEW TOP BLACK MOUNT THAT IS SUPPLIED IN THE HARDWARE. USE THE 8MM BOLTS AND THE 8MM LOCK NUT ALONG WITH THE 5/16 USS WASHERS. THE 8MM NUT WILL BE USED AS A JAM NUT, MOUNT THE BRACKET AS THE PIC. IS SHOWING. AND PROCEED TO TIGHTEN ALL BOLTS AND NUTS THAT WERE LOOSENED IN THE BEGINNING OF THE PROCESS.

