

6=3/16 X 1 LARGE FLAT WASHERS
6=1/4 LOCK NUTS
16=14-20 TORX HEAD
SCREWS(90390A535)

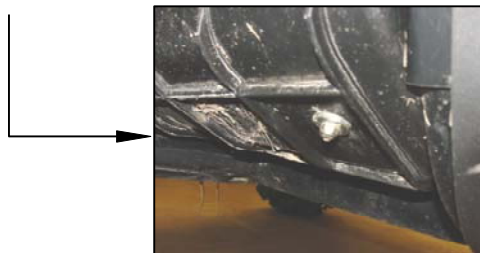


5018-AL

YAMAHA RHINO 660 4X4

TO INSTALL THE DRIVER SIDE PLATE SIMPLY PLACE THE FLOOR PLATE INTO PLACE AND DRILL 7/32" HOLES WHERE EACH HOLE IS PROVIDED. THEN PROCEED TO SECURE THE PLATE WITH THE TAPERED SCREWS PROVIDED.

THE TOP THREE SCREWS IN THE DRIVER SIDE PLATE WILL BE FASTENED UNDER THE PLASTIC FLOORBOARDS WITH THE SUPPLIED 3/16 X 1 WASHERS AND 1/4 LOCK NUTS. MAY HAVE TO TRIM THE PLASTIC UNDER THE PLASTIC FLOOR PAN FOR THE WASHERS TO CLEAR.



TO INSTALL THE PASSENGER SIDE PLATE SIMPLY PLACE THE FLOOR PLATE INTO PLACE AND DRILL 7/32" HOLES WHERE EACH HOLE IS PROVIDED. THEN PROCEED TO SECURE THE PLATE WITH THE TAPERED SCREWS PROVIDED.

THE TOP THREE SCREWS IN THE PASSENGER SIDE PLATE WILL BE FASTENED UNDER THE PLASTIC FLOORBOARDS WITH THE SUPPLIED 3/16 X 1 WASHERS AND 1/4 LOCK NUTS. MAY HAVE TO TRIM THE PLASTIC UNDER THE PLASTIC FLOOR PAN FOR THE WASHERS TO CLEAR.

