

- 2=3/8X1 1/4 BOLTS-A
- 2=3/8 LOCK NUTS-B
- 4=3/8 SAE WASHERS-C
- 4=5/16 X 1 1/4 BOLTS-D
- 4=5/16 LOCK NUTS-E
- 8=5/16 USS WASHERS-F

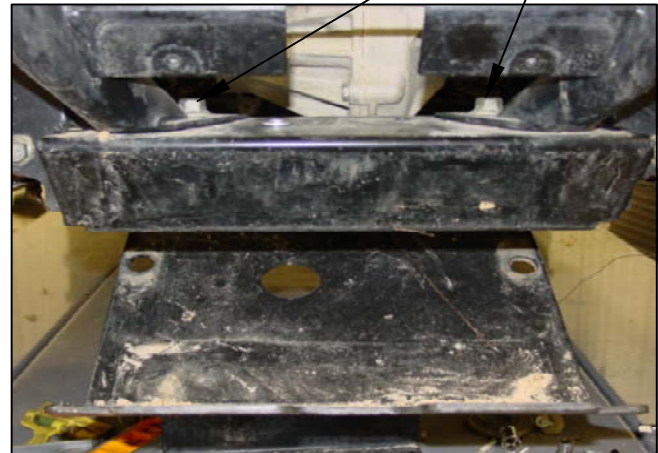
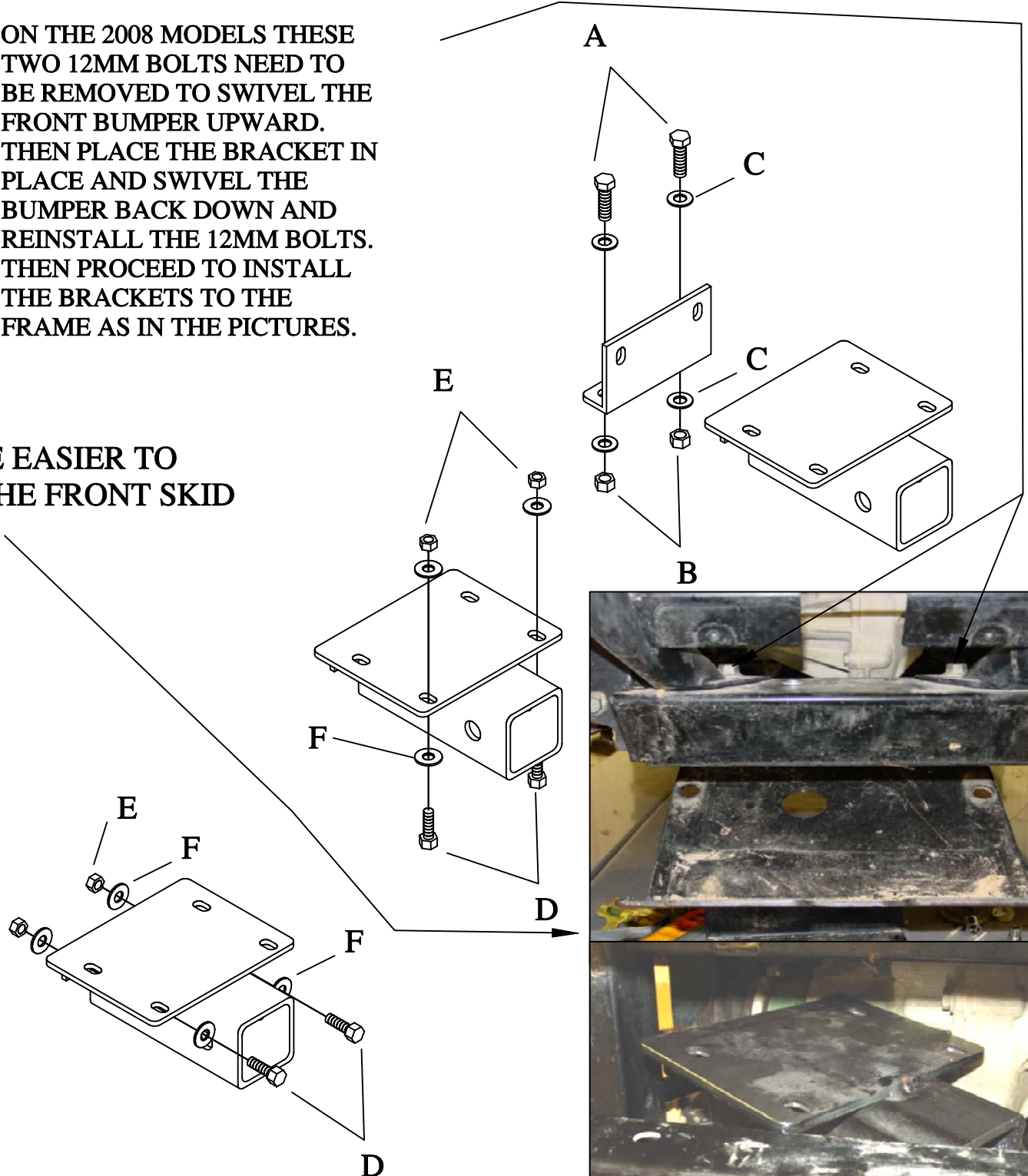


# #FRH100

## FRONT RECEIVER MOUNT FOR YAM. RHINO

ON THE 2008 MODELS THESE TWO 12MM BOLTS NEED TO BE REMOVED TO SWIVEL THE FRONT BUMPER UPWARD. THEN PLACE THE BRACKET IN PLACE AND SWIVEL THE BUMPER BACK DOWN AND REINSTALL THE 12MM BOLTS. THEN PROCEED TO INSTALL THE BRACKETS TO THE FRAME AS IN THE PICTURES.

MAY BE EASIER TO DROP THE FRONT SKID PAN.



PLACE THE FRH100 AT AN ANGLE AND THEN SLIDE UNDER THE LIP ON THE FRAME, BOLT AS THE DRAWING ILLUSTRATES.