

- 1=5/16 LOCK PIN-A
- 1=RUBBER TRIM LOCK-B-(18 1/2" LONG)
- 5=5/16 X 1 BOLTS-C
- 8=5/16 LOCK NUTS-D
- 8=5/16 USS WASHERS-E
- 6=5/16 SAE WASHERS-F



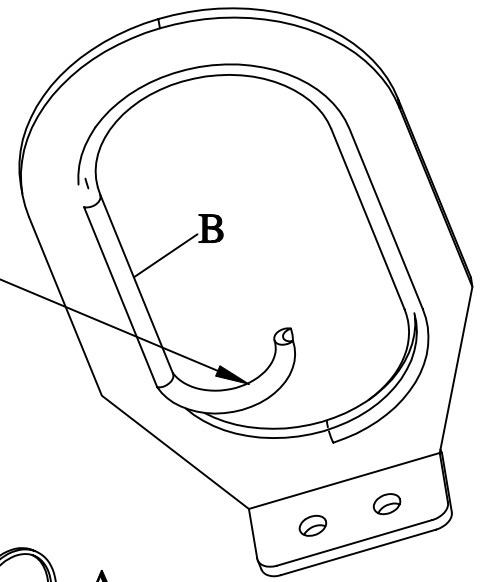
# # 20046

## UNIVERSAL GUN BOOT MOUNT .

- 3=1/4 X 3/4 U-BOLTS- G-(USED ON HONDA RINCON AND LARGER ROUND TUB. RACKS)
- 6=1/4 USS WASHERS-H
- 6=1/4 LOCK NUTS-I
- 3=1/4 X 1/2 U-BOLTS-J
- 3=1 1/2" BLACK ROUND WASHERS-K
- 3=5/16 X 2 BOLTS-L-(USED ON NEWER POLARIS RACKS THAT HAVE A 1" THICK REAR RACK)
- 3=5/16 X 2 1/4 BOLTS-M-(USED ON OLDER POLARIS RACKS THAT HAVE A 1 1/2" THICK REAR RACK)

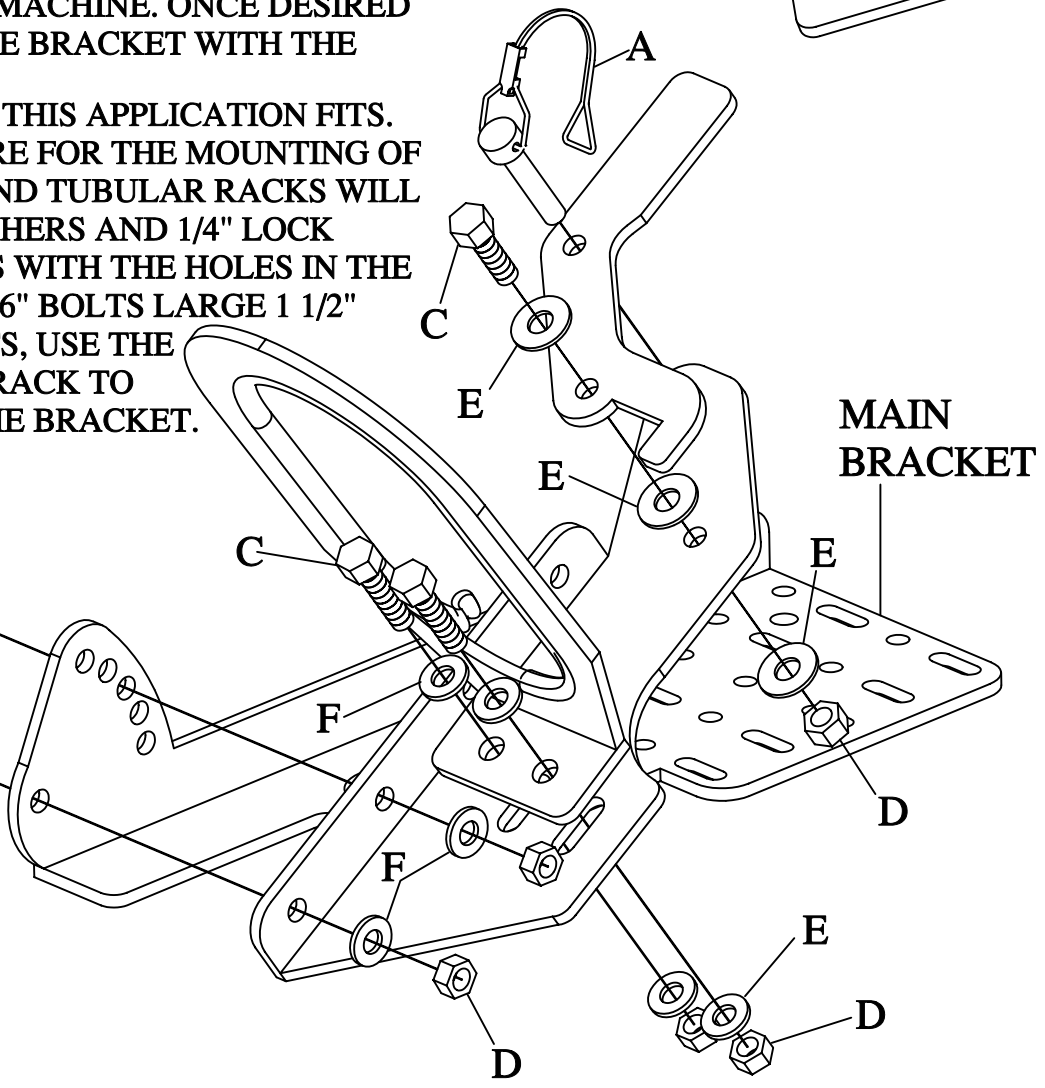
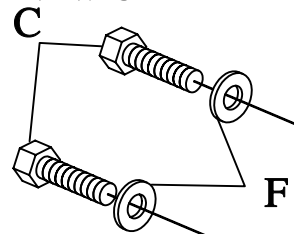
THIS HARDWARE IS USED TO MOUNT THE MAIN BRACKET TO THE REAR RACK OF THE ATV.

INSTALL THE TRIM LOCK INTO THE MEATL RING.



PLACE BOOT INTO BRACKET AND PLACE THE BRACKET ONTO THE REAR RACK OF THE MACHINE. ONCE DESIRED POSITION IS FOUND SECURE THE BRACKET WITH THE CORRECT HARDWARE.

BECAUSE OF THE MANY BIKES THIS APPLICATION FITS. THERE IS DEFERENT HARDWARE FOR THE MOUNTING OF THE MAIN BRACKET. ALL ROUND TUBULAR RACKS WILL USE THE 1/4" U-BOLTS 1/4" WASHERS AND 1/4" LOCK NUTS... THE COMPOSITE RACKS WITH THE HOLES IN THE REAR RACKS WILL USE THE 5/16" BOLTS LARGE 1 1/2" WASHERS AND 5/16" LOCK NUTS, USE THE LARGE WASHERS UNDER THE RACK TO SANDWICH THE RACK WITH THE BRACKET.



MUST USE AT LEAST THREE MOUNTING LOCATIONS WHEN MOUNTING THE MAIN BRACKET TO THE REAR OF THE ATV. TWO TOWARD THE OUTSIDE OF THE BRACKET AND ONE ON THE INSIDE OF THE BRACKET.