

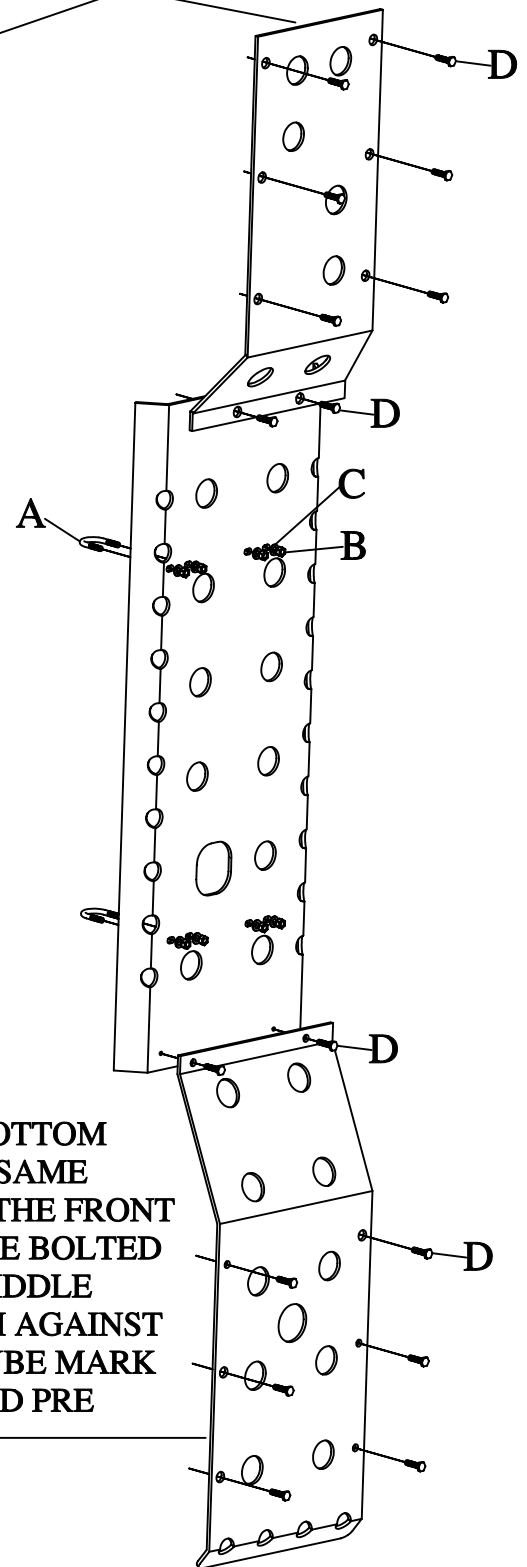
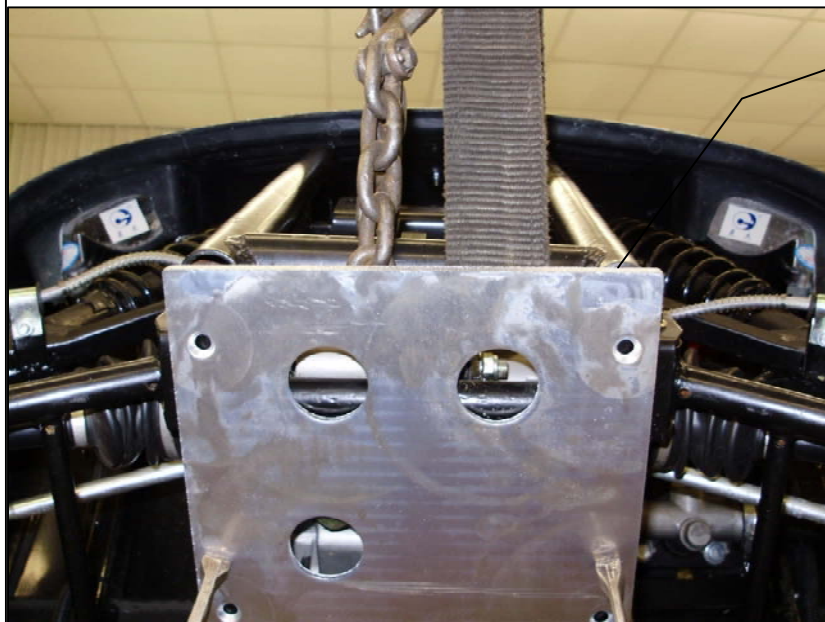
- 4=1/4 X 1/2 U-BOLTS-A
- 8=1/4 LOCK NUTS-B
- 8=1/4 SAE WASHERS-C
- 16=1/4 TORX HEAD BOLTS-D



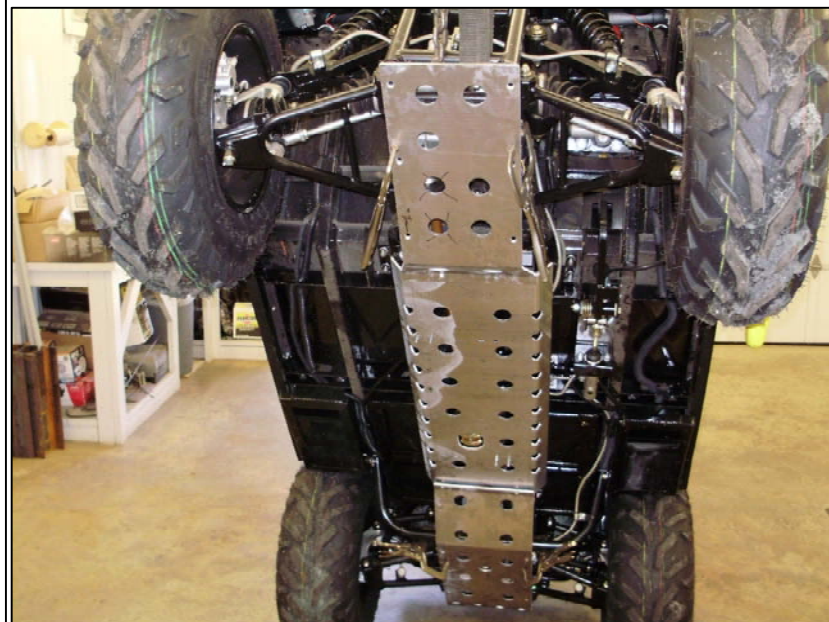
SP129-AL

RUFF & TUFF HUNTER EDITION

START AT THE TOP FOR THE INSTALL. PLACE THE FRONT SKID EVEN WITH THE FRONT BUMPER TUBE. PROCEED TO MARK YOU HOLES ON THE FRAME TUBE AND REMOVE THE SKID. USE A 7/32 DRILL BIT TO PRE DRILL THE HOLES.



THE TOP OF THE CENTER SKID WILL BOLT TO THE BOTTOM OF THE FRONT SKID. THEN PROCEED DOWN TO THE MIDDLE OF THE CENTER SKID IT WILL UBOLT TO THE ROUND BAR CAGING THE DRIVE SHAFT. PROCEED ON TO THE BOTTOM OF THE CENTER SKID IT WILL BOLT TO THE TOP OF THE BOTTOM SKID.



ON THE BOTTOM SKID THE SAME STEPS AS THE FRONT SKID. ONCE BOLTED TO THE MIDDLE SKID PUSH AGAINST FRAME TUBE MARK HOLES AND PRE DRILL.