

- 2=1/4 X 1/2 U-BOLTS
- 4=1/4 LOCK NUTS
- 4=1/4 SAE WASHERS
- 4=5/16 X 1 BOLTS
- 4=5/16 LOCK NUTS
- 10=5/16 SAE WASHERS
- 4=3/16 X 1 ZINC WASHERS
- 2= #16LB TINNER RIVETS

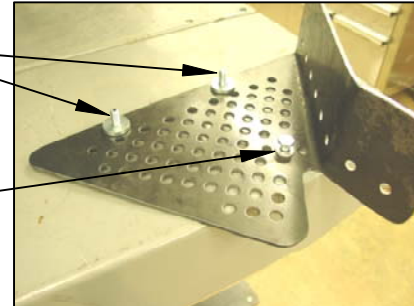


# # SS154H

## KAWASAKI MULE 610 4X4

USE TWO OF THE 5/16 X 1 BOLTS WITH TWO 5/16 SAE WASHERS RUN THE BOLTS THROUGH THE TOP TWO HOLES THEN PLACE TWO OF THE THICK 3/16 X 1 WASHERS ONTO THE BOLTS THESE ARE USED AS SPACERS.

INSERT ONE TINNER RIVET WITH ONE 5/16 SAE WASHER THIS IS USED AS A SPACER FOR THE 1/4 X 1/2 U-BOLT.



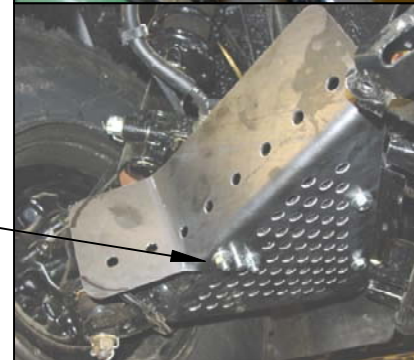
ONCE THE GUARDS ARE PLACED UNDER THE A-ARMS THE BOLTS WILL RUN THROUGH TWO HOLES THAT ARE SUPPLIED ON THE A-ARM. USE A 5/16 SAE WASHER AND 5/16 LOCK NUT TO SECURE.



ONCE THE GUARDS ARE PLACED UNDER THE A-ARMS THEIR WILL BE TWO 1/4 X 1/2 U-BOLTS PLACED NEAR THE BENDS IN THE FRONT OF THE GUARDS.



THIS IS A PIC. OF THE GUARD FROM UNDERNEATH PLACE THE 1/4 LOCK NUTS AND 1/4 SAE WASHERS ON THE U-BOLTS.



MAKE SURE THE BENT PART FACES THE INSIDE OF THE RIMS.

