

- 2= 10MM X 70MM BOLTS-A
- 2= 10MM NUTS-B
- 10= 1/4 LOCK NUTS-C
- 14= 1/4 USS WASHERS-D
- 10= 1/4 X 7/8 BOLTS-E
- 2= SPACER #3 (5/8" LONG)

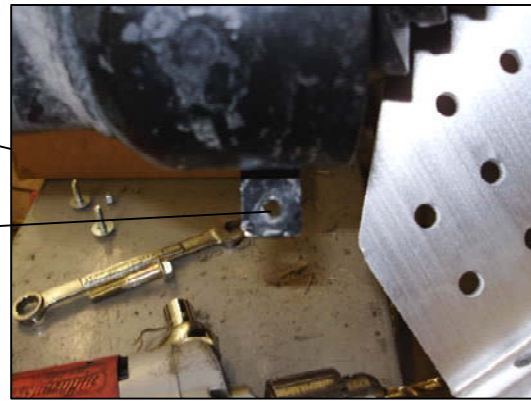


SS211H-AL

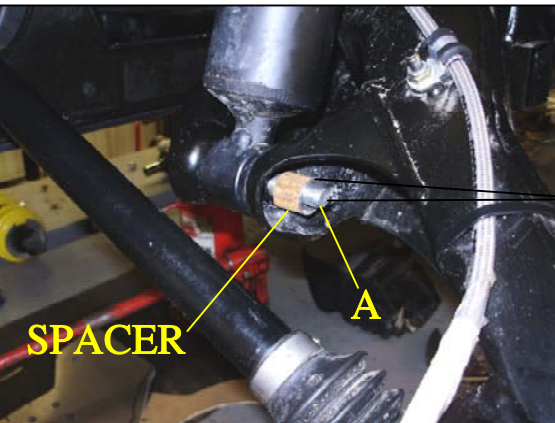
REAR COMMANDER GUARDS

THIS IS A VIEW FROM THE REAR RIGHT SIDE OF THE UNIT. REPEAT THE SAME PROCEDURE FOR MOUNTING ON THE LEFT SIDE ALSO.

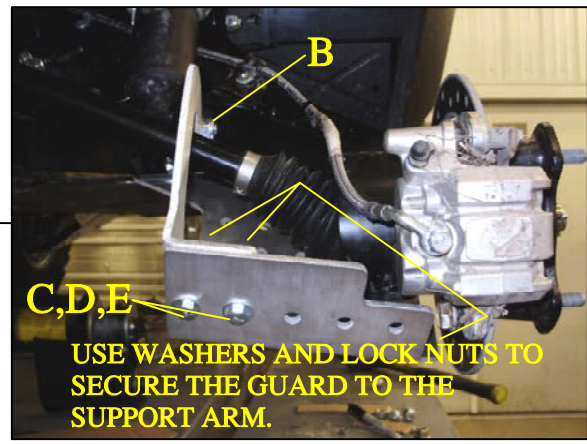
1ST PLACE A JACK UNDER THE CENTER OF THE UNIT AND REMOVE THE WHEELS. THEN REMOVE THE PLASTIC GUARDS AND RIVETS THAT HOLD THE GUARDS. THEN YOU MUST TAKE A 5/16 DRILL BIT AND DRILL OUT THE HOLE IN THE SMALL MOUNTING TAB LOCATED ON THE END OF THE TRAILING ARM. USE A 1/4 BOLT WASHER AND 1/4 NUT TO SECURE THE GUARD TO THIS TAB.



2ND REMOVE THE STOCK BOTTOM SHOCK MOUNTING BOLT. INSERT THE NEW LONGER BOLT PROVIDED IN HARDWARE. SLIDE ONE OF THE 5/8" SPACERS OVER THE TREADS AND YOU ARE READY FOR THE SUPPORT ARM TO BE MOUNTED. LEAVE ALL HARDWARE LOOSE UNTIL ALL HAS BEEN IN PLACE.



3 STEP PLACE THE NEW GUARD INTO PLACE WITH THE SUPPORT ARM. THEN INSERT ALL HARDWARE LEAVING ALL HARDWARE LOOSE.



USE THE 1/4 NUTS ON THE INSIDE TO SECURE THE GUARD TO THE ARM.

MAKE SURE YOU INSTALL THE BOLTS WASHERS AND NUTS TO HOLE THE FRONT OF THE GUARD. THESE WILL BE INSERTED FROM THE BOTTOM UPWARD. NOW YOU ARE READY TO TIGHTEN ALL LOOSE HARDWARE. INSTALL THE WHEELS AND YOU ARE DONE.

