

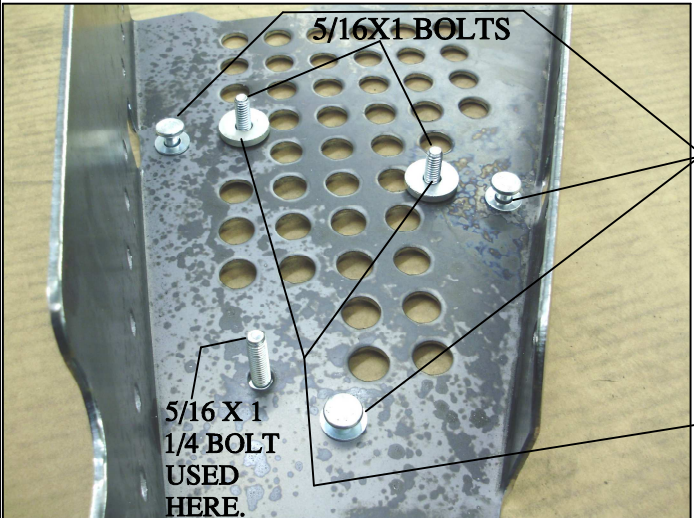
- 4=QC101 CLIPS-A
- 6=ALUM TANNER RIVETS-B
- 6=5/16 SAE WASHERS-C
- 4=5/16 X 1 BOLTS-D
- 2=5/16X1 1/4 BOLTS-F
- 2=5/16 LOCK NUTS-G
- 4=1" THICK ZINC WASHERS

WHEN INSTALLING GUARDS LEAVE ALL FASTENERS LOOSE UNTIL ALL HARDWARE IS IN PLACE THEN PROCEED TO SECURE THE GUARDS. MUST CHECK FOR PROPER CLEARANCE FOR THE RIMS AND BRAKE CALIPERS. TO CHECK FOR THIS LIFT THE FRONT OF THE ATV OFF THE GROUND AND TURN WHEELS FROM LEFT TO RIGHT AND MAKE SURE NOTHING IS TOUCHING THE GUARDS.



# #SS226H

## FRONT POALRIS RANGER XP900 4X4 2014



**MUST REMOVE ANY PLASTIC GUARDS THAT ARE ON THE LOWER ARMS.**

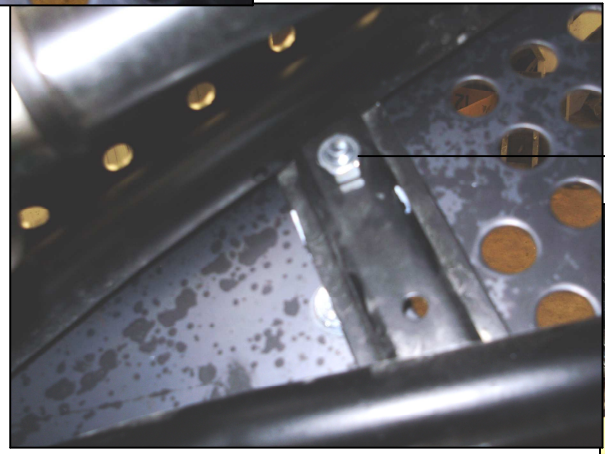
**PLACE THE RIVETS AND WASHERS IN THESE 5/16 HOLES. THESE ARE USED AS SPACERS TO SPACE THE GUARD FROM THE PIPE OF THE ARM. THIS IS FOR CLEANING PURPOSES.**

**THE BOLTS TO MOUNT THE CLIPS WILL INSERT INTO THESE HOLES. USE THE WASHER FOR THE BOLTS ALSO..**

**EVEN THOUGH THE NEW BOOT GUARDS YOU HAVE PURCHASED WILL COVER MORE THAN THE ORIGINAL PLASTIC GUARDS. BOOTS HAVE BEEN REPORTED TO BE TORN IN SOME CONDITIONS .DUE TO THE TURING RADIUS ON SOME OF THE NEWER ATV'S. THE BOOT PROTECTORS HAVE BEEN MANUFACTURED SMALLER TO ALLOW FOR A TIGHTER TURING RADIUS. SAVANT MFG. (STRONG MADE) DOES NOT WARRANTY AND TORN BOOTS.**



**PICTURES OF THE CLIPS ONCE THEY ARE MOUNTED AROUND THE TUBING OF THE ARM. DONT FORGET TO USE THE 1" THICK WASHERS UNDER THE CLIPS.**



**USE THE 1 1/4 BOLTS TO MOUNT THE FRONT OF THE GUARD. IT WILL INSERT INTO THE LARGER ROUND HOLE ONE THE STRAP.**



**FINISHED PICTURE OF THE GUARD ONCE IT HAS BEEN MOUNTED TO THE ARM.**