

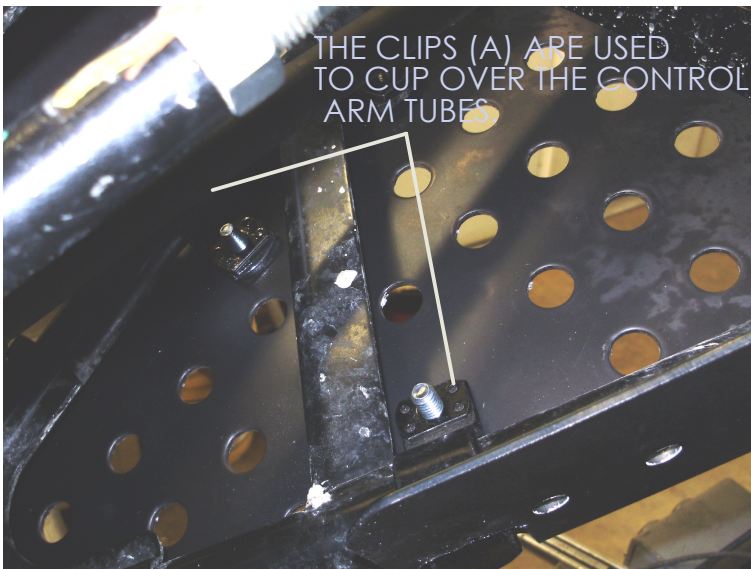
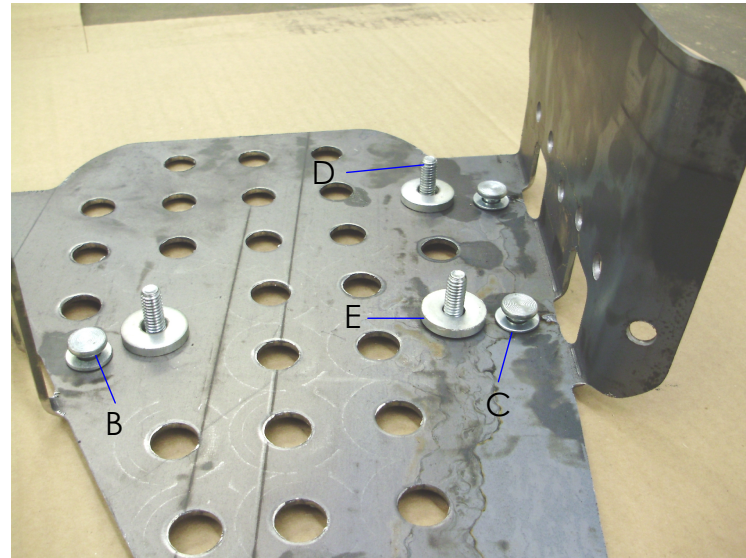
- 6=QC101 CLIPS-A
- 6=ALUM RIVETS-B
- 6=5/16 SAE WASHERS-C
- 6=5/16X1 BOLTS-D
- 6=3/16X1 ZINC WASHERS-E



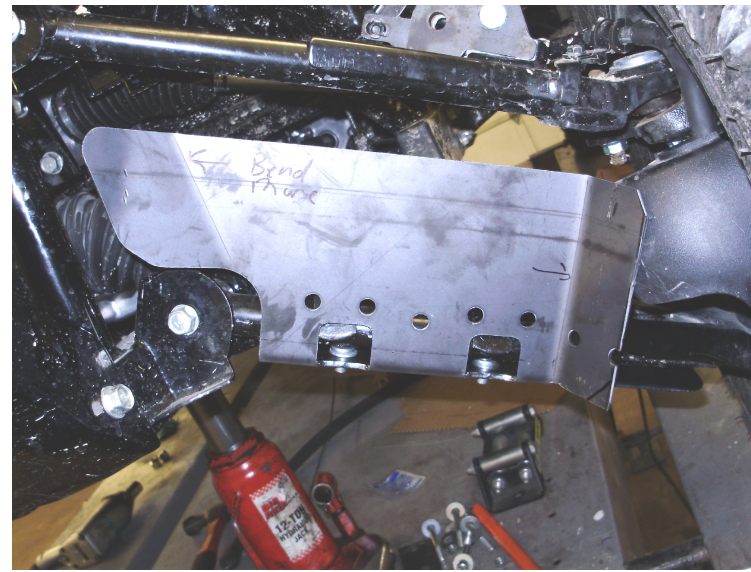
SS227H
HONDA PIONEER 700

PLACE ALL HARDWARE INTO THE GUARDS THEN PLACE THEM UNDER THE ARMS USE THE CLIPS TO SECURE THE GUARDS TO THE ARMS. LEAVE ALL HARDWARE LOOSE UNTIL ALL HARDWARE IS INTO PLACE AND GUARDS LOOK POSITIONED CORRECTLY THEN TIGHTEN.

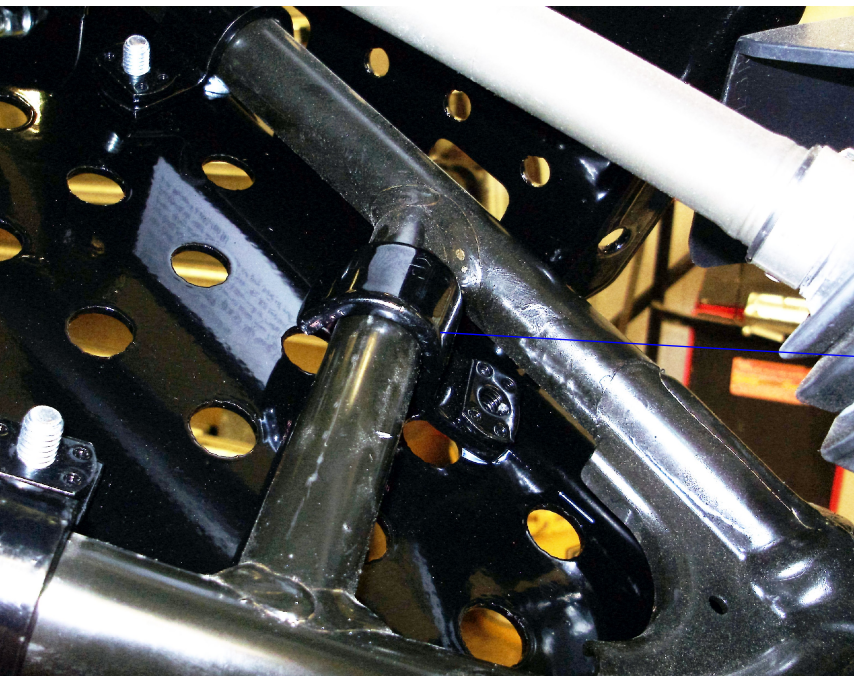
THESE THREE PICS ARE USED ON 2016 AND OLDER THE 2017S WILL MOUNT A LITTLE DIFFERENTLY BUT USE THE SAME GUARD. PLACE THE RIVETS AND WASHERS INTO THE SMALLER OF THE TWO HOLES. THE THICK WASHER WILL BE USED AS A SPACER BETWEEN THE GUARD AND THE CLIPS.



THE CLIPS (A) ARE USED TO CUP OVER THE CONTROL ARM TUBES



THIS IS A PIC OF THE 2017 MODELS



ON 2017 MODELS THERE IS A ROUND BAR THAT YOU WILL USE FOR THE LOWER CLIP MOUNT. THIS IS A PIC OF THE RIGHT SIDE WHEN SITTING ON UNIT. THE LEFT SIDE WILL MOUNT THE SAME.

ONCE ALL GUARDS ARE MOUNTED LIFT UNIT WITH THE FRONT WHEELS OFF THE GROUND TURN THE WHEELS FROM LEFT TO RIGHT MAKE SURE NOTHING IS TOUCHING. IF SO YOU MAY NEED TO ADJUST THE GUARDS BY SLIDING THEM UPWARDS ON THE ARMS TOWARD THE FRAME.