

6=1/4X1/2 U-BOLS  
6=ALUM. RIVETS  
6=5/16 SAE WASHERS  
12=1/4 LOCK NUTS

**MUST REMOVE THE PLASTIC GUARD ON THE ARM. LEAVE THE ONE THAT IS BOLTED TO THE KNUCKLES.**

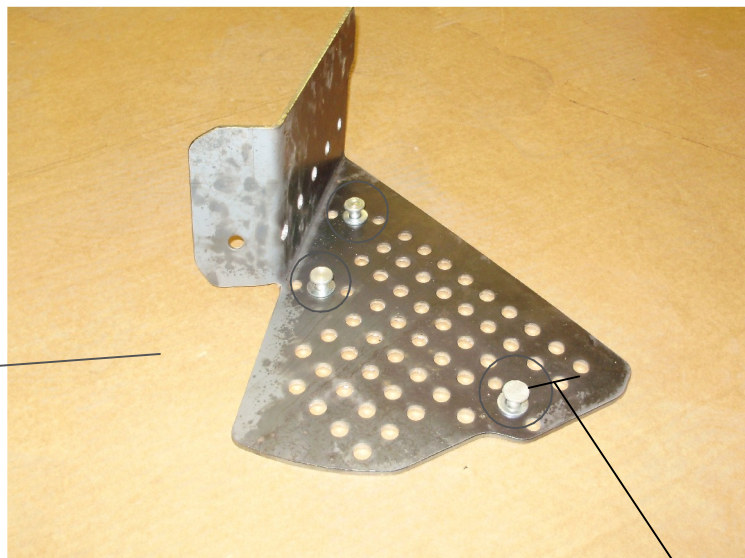
WHEN INSTALLING GUARDS LEAVE ALL FASTENERS LOOSE UNTIL ALL HARDWARE IS IN PLACE THEN PROCEED TO SECURE THE GUARDS. MUST CHECK FOR PROPER CLEARANCE FOR THE RIMS AND BRAKE CALIPERS. TO CHECK FOR THIS LIFT THE FRONT OF THE ATV OFF THE GROUND AND TURN WHEELS FROM LEFT TO RIGHT AND MAKE SURE NOTHING IS TOUCHING THE GUARDS.

**PLACE THE RIVETS AND WASHERS INTO THESE HOLES FOR THE SPACERS OFF THE ARMS.**



# # SS230H

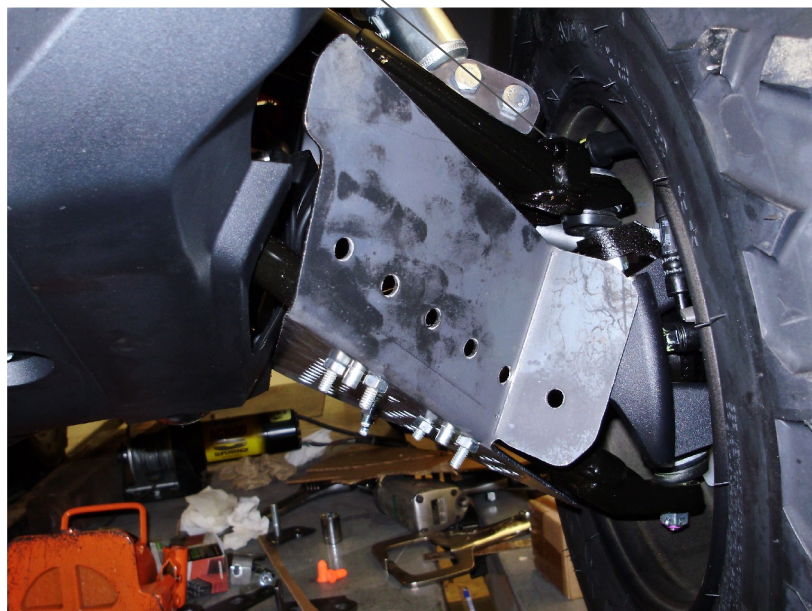
HONDA FOREMAN 500 4X4 2014



**ON THE FOREMANS THIS UBOLT HAS BEEN MOVED CLOSER TO THE END OF THE PLATE.**

**AFTER THE PLASTIC GUARD IS REMOVED PLACE THE GUARD UNDER THE ARM INSERT THE 1/4" U BOLTS AND SECURE WITH THE 1/4" NUTS.**

**THIS IS A PICTURE OF THE GUARD MOUNTED.**



**EVEN THOUGH THE NEW BOOT GUARDS YOU HAVE PURCHASED WILL COVER MORE THAN THE ORIGINAL PLASTIC GUARDS. BOOTS HAVE BEEN REPORTED TO BE TORN IN SOME CONDITIONS .DUE TO THE TURING RADIUS ON SOME OF THE NEWER ATV'S. THE BOOT PROTECTORS HAVE BEEN MANUFACTURED SMALLER TO ALLOW FOR A TIGHTER TURING RADIUS. SAVANT MFG. (STRONG MADE) DOES NOT WARRANTY AND TORN BOOTS.**