

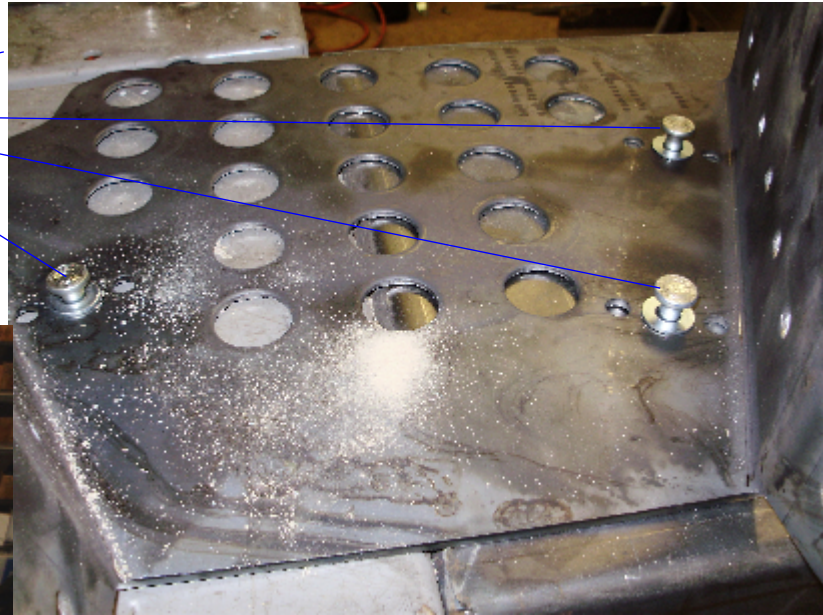
6=1/4X1/2 U BOLTS
12=1/4 LOCK NUTS
6= ALUM RIVETS
6=5/16 SAE WASHERS



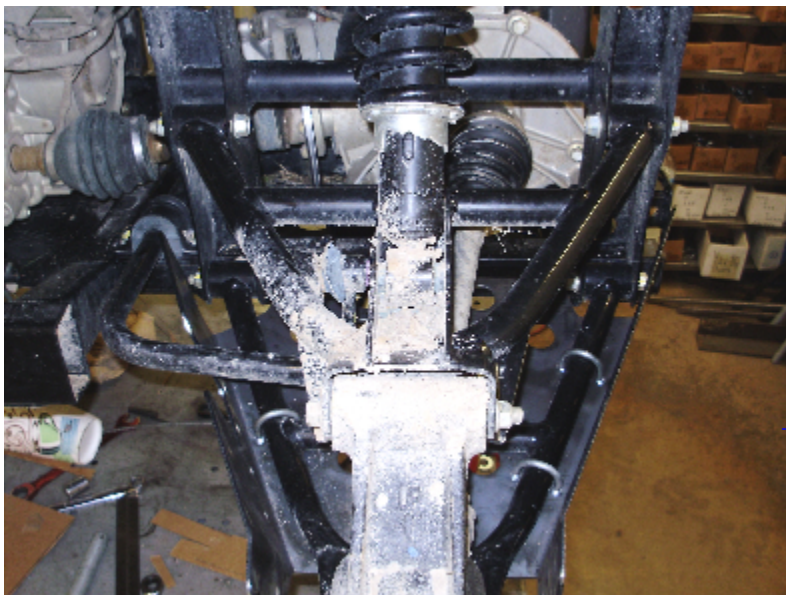
SS233H

HONDA PIONEER 500 REAR GUARDS

1ST STEP PLACE THE ALUM RIVETS WITH THE 5/16 SAE WASHERS INTO THE MIDDLE HOLES ON THE MOUNTING HOLES. THESE ARE USED AS SPACERS FOR CLEANING.



2ND STEP PLACE THE GUARD UNDER THE CONTROL ARM AND INSERT THE UBOLTS OVER TUB. INTO MOUNTING HOLES. THIS PROCESS IS MUCH EASIER IF THE WHEEL IS REMOVED.



THIS IS A VIEW OF THE REAR DRIVER SIDE.

THIS IS A PIC OF THE GUARD ONCE IT HAS BEEN MOUNTED. THIS IS A VIEW FROM THE REAR OF THE MACHINE. THE BENT LIPS WILL FACE THE INSIDE OF THE WHEEL. REPEAT SAME PROCEDURE FOR THE LEFT SIDE.

EVEN THOUGH THE NEW BOOT GUARDS YOU HAVE PURCHASED WILL COVER MORE THAN THE ORIGINAL PLASTIC GUARDS. BOOTS HAVE BEEN REPORTED TO BE TORN IN SOME CONDITIONS. DUE TO TIGHTER TURNING RADIUS ON SOME OF THE NEWER ATVS. THE GUARDS HAVE BEEN MANUFACTURED TO BE SMALLER. **STRONG MADE DOES NOT WARRANTY ANY TORN BOOTS.**

