

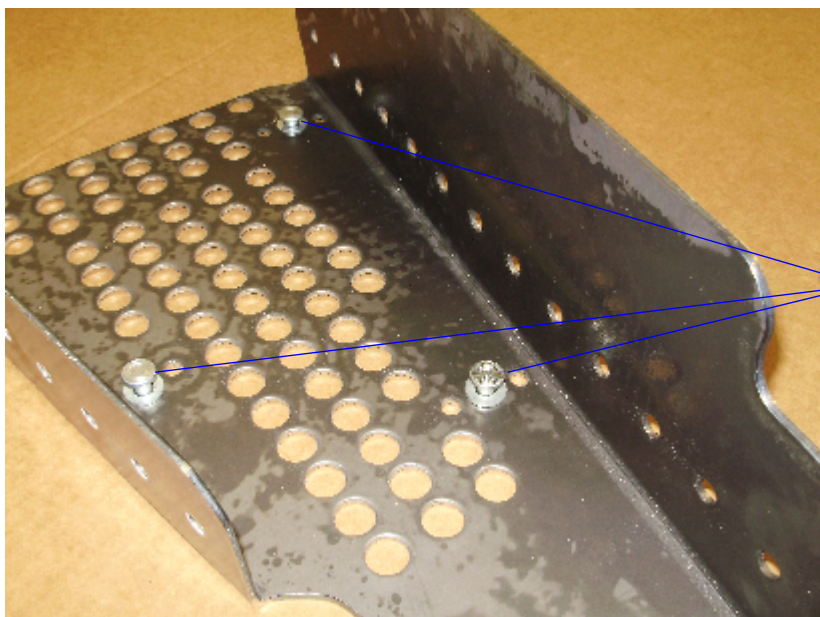
6=1/4X1/2 UBOLTS
6=ALUM RIVETS
6=5/16 SAE WASHERS
12=1/4 LOCK NUTS



#SS234H

KAWASAKI MULE FXT 4X4 FRONT GUARDS

1ST PLACE THE RIVETS AND WASHERS INTO THE MIDDLE HOLE OF THE SMALLER SET OF HOLES. THERE WILL BE THREE LOCATIONS FOR THIS THESE WILL BE USED AS SPACERS ON THE ARMS.



ONCE SPACERS HAVE BEEN INSERTED INTO HOLES. PLACE GUARD UNDER THE ARM AND PROCEED TO INSERT UBOLTS OVER TUBE INTO THE HOLES. YOU WILL USE THREE UBOLTS PER SIDE.



LAST STEP PLACE 1/4 LOCK NUTS ONTO EACH THREAD AND SECURE THE GUARD TO ARM. BE CAREFUL TO NOT OVER TIGHTEN GUARD AND CAUSE BENDING OF GUARD.

REPEAT PROCEDURE FOR BOTH SIDES THIS IS THE LEFT SIDE LOOKING AT THE MACHINE.



THE NEW GUARDS THAT YOU HAVE PURCHASED WILL COVER MORE THAN THE ORIGINAL PLASTIC GUARDS. BOOTS HAVE BEEN REPORTED TO BE TORN IN SOME CONDITIONS.DUE TO TIGHTER TURNING RADIUS ON SOME OF THE NEWER ATVS. THE GUARDS HAVE BEEN MANUFACTURED TO BE SMALLER. STRONG MADE **DOES NOT** WARRANTY ANY TORN BOOTS.