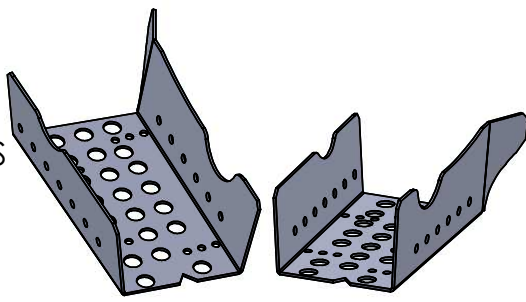


8=1/4X1/2 U-BOLTS  
16=1/4 LOCK NUTS  
8=ALUM RIVETS  
8=5/16 SAE WASHERS

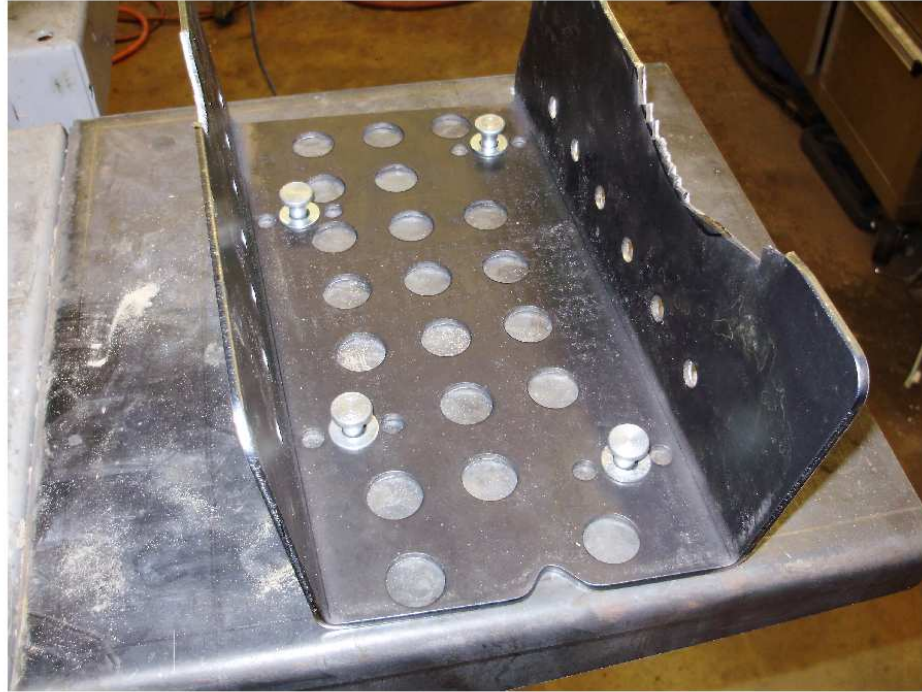


**#SS237H**

HONDA RINCON 680 2015 REAR GUARDS

1ST MUST REMOVE THE FACTORY PLASTIC GUARDS THAT COME ON THE MACHINE.

NEXT PLACE ALUM RIVETS AND WASHERS INTO THE CENTER HOLES FOR SPACING.



PLACE GUARD UNDER THE ARM WITH THE WASHERS AND RIVETS INTO POSITION. SLIDE IT DOWN TILL TOUCHES ROUND PIPE ON ARM. INSTALL THE UBOLTS AROUND THE TUBE OF ARM AND THREAD THE LOCK NUTS ONTO UBOLTS. TIGHTEN ALL HARDWARE.

