

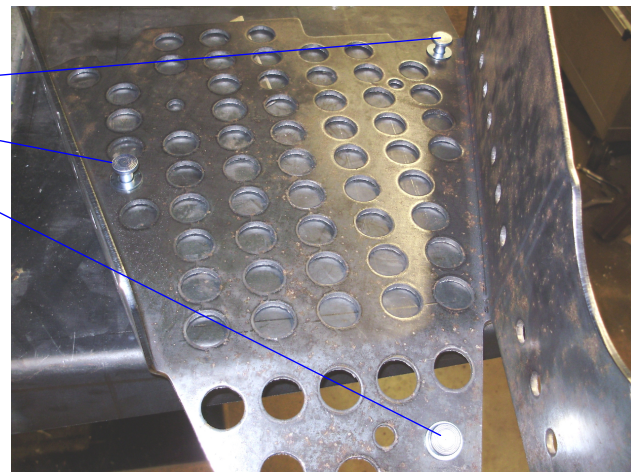
6=SPACER #6  
4=6MMX25MM BOLTS  
6=ALUM RIVETS  
6=5/16 SAE  
8=1/4 USS WASHERS  
2=1/4X1 1/4 BOLTS  
2=1/4 LOCK NUTS



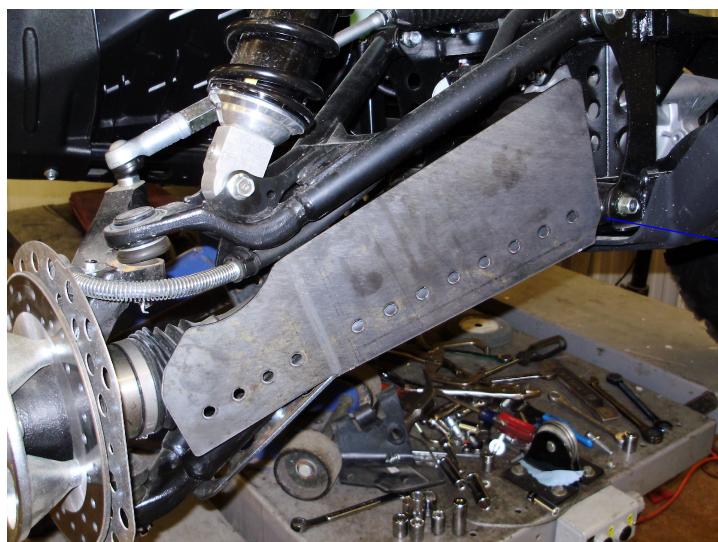
## # SS238H

FRONT GUARDS YAMAHA WOLVERINE 700 SXS

PLACE RIVETS WITH WASHERS INTO THESE SMALL HOLES ON THE INSIDE OF GUARD. THESE ARE USED AS SPACERS ONCE INSTALLED.



PLACE THE GUARD UNDER THE ARM LINE THE HOLES UP WITH THE THREADED TABS. THE ONE ON THE TOP LEFT IS NOT THREADED YOU WILL USE THE 1/4X1 1/4 BOLT 1/4 WASHERS AND LOCK NUT HERE.



MAKE SURE TO PLACE THE SPACERS BETWEEN THE TABS AND GUARD BEFORE TIGHTENING ALL HARDWARE.



INSERT THE 1/4X1 1/4 BOLT WITH A WASHER ON EACH SIDE AND LOCK NUT ON THE INSIDE OF THE ARM.

ONCE BOTH GUARDS HAVE BEEN MOUNTED LIFT THE FRONT OF THE MACHINE OFF THE GROUND. TURN THE WHEELS MAKE SURE NOTHING IS RUBBING OR TOUCHING BEFORE OPERATING THE MACHINE.

