

- 2=1/4 X 1/2 UBOLTS
- 6= ALUM. RIVITS
- 6=5/16 SAE WASHERS
- 6=1/4 LOCK NUTS
- 2=1/4 X 2 1/4 BOLTS
- 8=1/4 SAE WASHERS
- 2=6MM X 25MM BOLTS

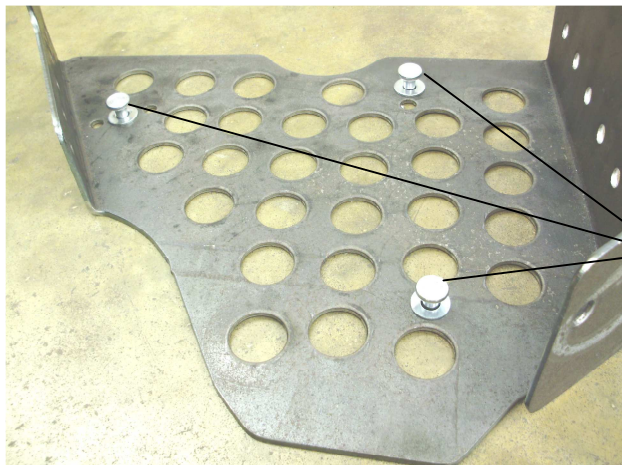


# # SS241H

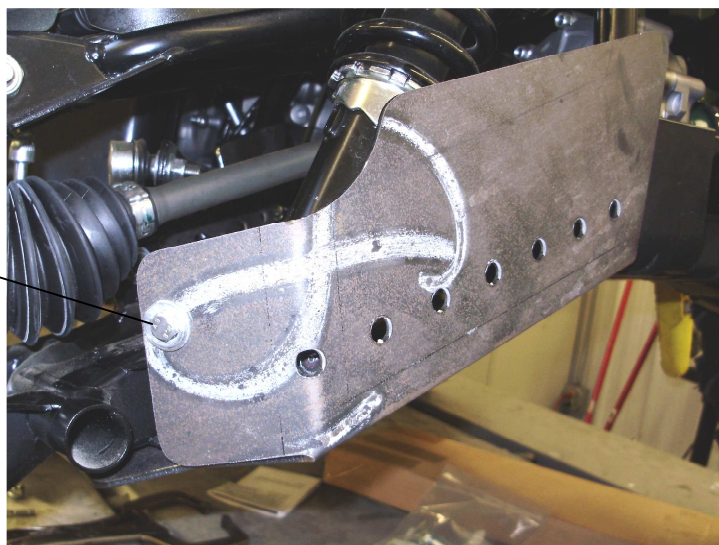
## YAMAHA GRIZZLY 700 REAR GUARDS

Must remove the stock plastic guards before starting to mount the new metal guards..

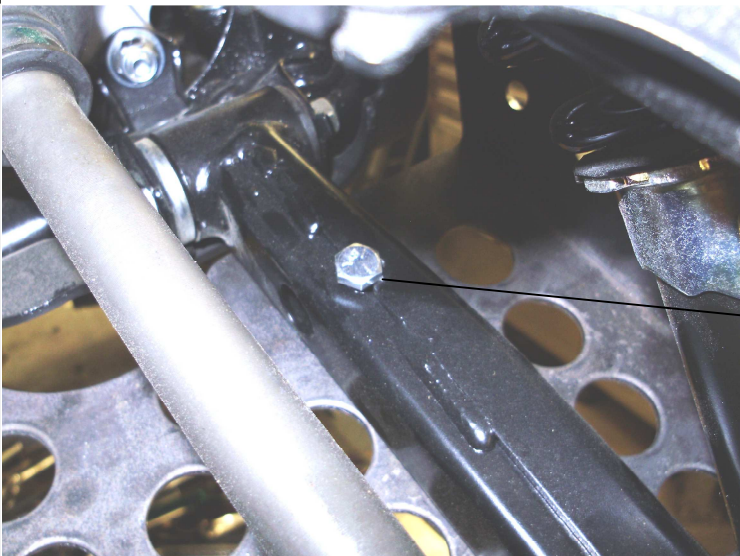
1st Place the rivets and 5/16 sae washers into the designated holes on the plate. these will be used as spacers for cleanout.



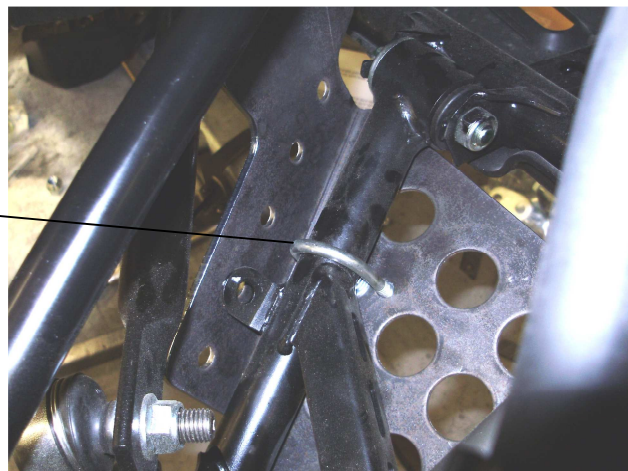
2nd Place the guard under the control arm with the bent lip facing the wheel. Use the 6mm bolt with 1/4 washer to thread into the stock mounting tab.



3rd Use the 1/4 bolt with 1/4 washers and lock nut. Nut and washer are used under the guard to mount the upper side of the guard to the arm.



4th Use 1/4x1/2 u bolt to secure the upper rear of the guard to the arm. 1/4 washers and nuts will be used under the guard.



Repeat the same mounting procedure for both sides.

EVEN THOUGH THE NEW BOOT GUARDS YOU HAVE PURCHASED WILL COVER MORE THAN THE ORIGINAL PLASTIC GUARDS. BOOTS HAVE BEEN REPORTED TO BE TORN IN SOME CONDITIONS. SAVANT MFG. (STRONG MADE) DOES NOT WARRANTY ANY TORN BOOTS.