

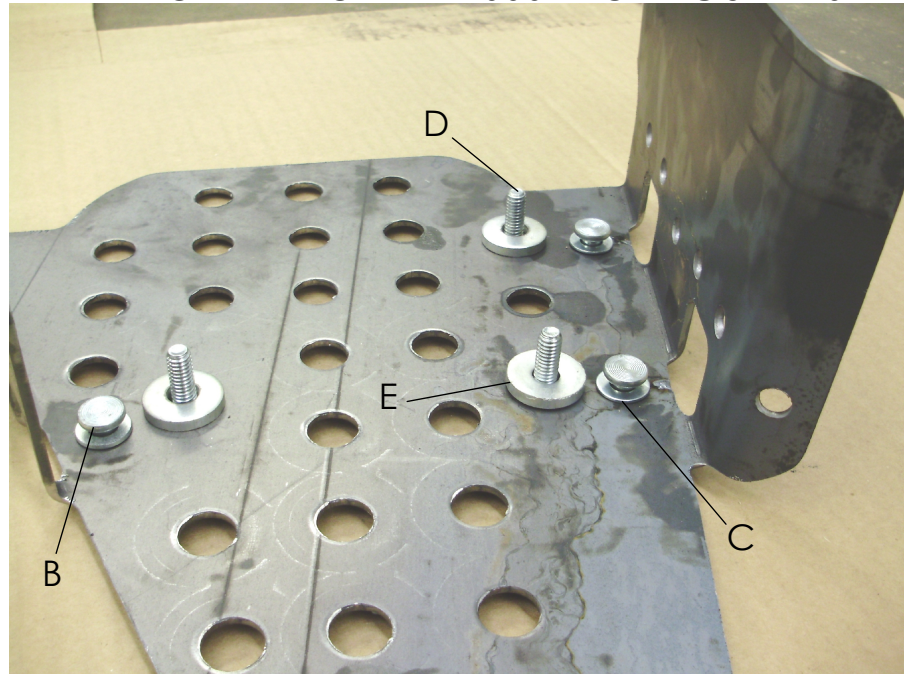
6=QC101 CLIPS-A  
6=ALUM. RIVETS-B  
6=5/16 SAE WASHERS-C  
6=5/16 X 1 BOLTS-D  
6=3/16 X 1 ZINC WASHERS-E



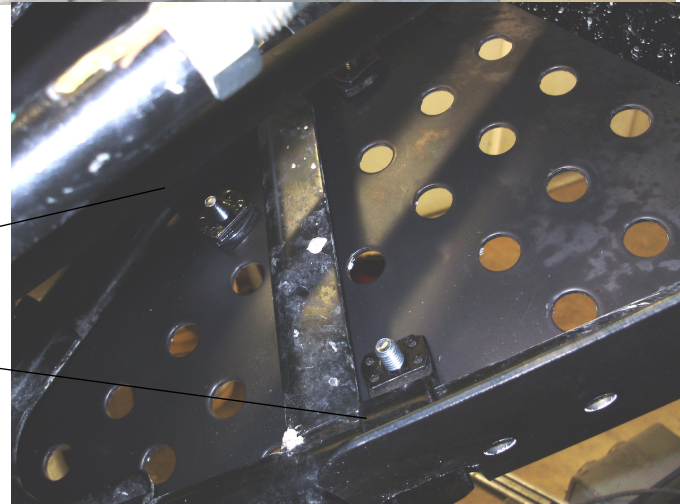
# #SS242H

HONDA PIONEER 1000 FRONT GUARDS

PLACE THE RIVETS AND WASHERS INTO THE OUTER OF THE TWO HOLES. THE THICK WASHER WILL BE USED AS A SPACER BETWEEN THE GUARD AND MOUNTING CLIPS.



PLACE THE CLIPS AROUND THE BAR OF THE ARM TO SECURE THE GUARD.



PLACE THE HARDWARE INTO THE GUARD AND THEN PLACE IT UNDER THE ARM. USE THE CLIPS TO MOUNT TO THE ARM. THIS IS A PIC OF THE FRONT RIGHT SIDE ONCE MOUNTED. THE LEFT SIDE WILL MOUNT THE SAME WAY.

ONCE MOUNTED TURN WHEELS FROM LEFT TO RIGHT MAKE SURE NOTHING IS TOUCHING IF ANY PART OF THE GUARD IS TPOUCHING. LOOSEN AND READJUST.

