

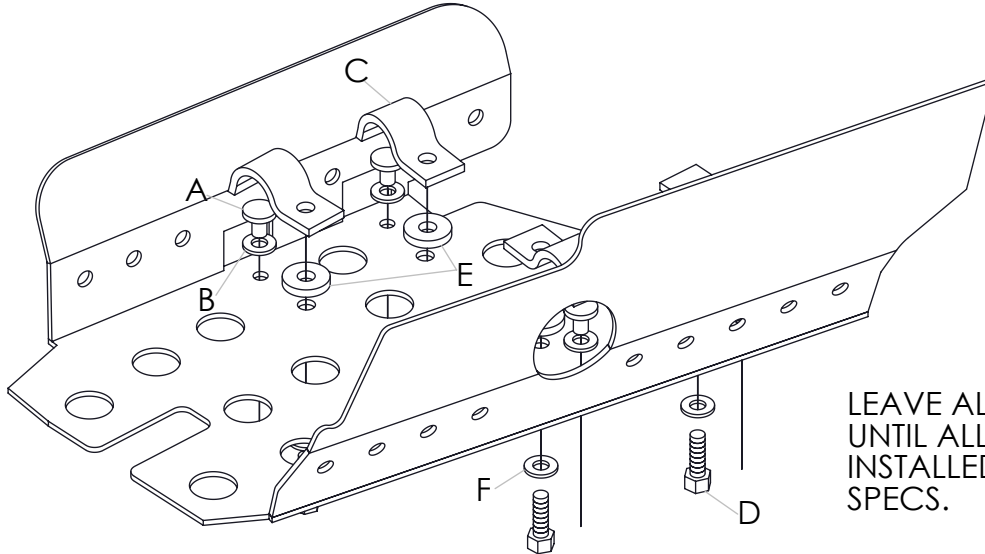
8=#16 TANNER RIVETS-A
8=5/16 SAE WASHERS-B
8=QC101 CLIPS-C
8=5/16X1 BOLTS-D
8=3/16X1X3/16 WASHERS-E
8=5/16 USS WASHERS-F

IT IS RECOMMENDED TO REMOVE THE WHEELS FOR MOUNTING OF THE GUARDS. MAKES THE PROCESS EASIER BUT IT IS NOT REQUIRED.



#SS244H

POLARIS SPORTSMAN 1000 REAR



LEAVE ALL FASTENERS LOOSE UNTIL ALL HARDWARE IS INSTALLED. THEN TIGHTEN TO SPECS.

THIS IS A PIC OF THE REAR LEFT. THE REAR RIGHT WILL MOUNT THE SAME. BUT THE REAR BEND ON THE GUARD WILL BE SHORTER.

MAKE SURE ALL BRAKE LINES ARE NOT GOING TO TOUCH ANY PART OF THE GUARDS AS THEY PIVOT WITH SUSPENSION.

