

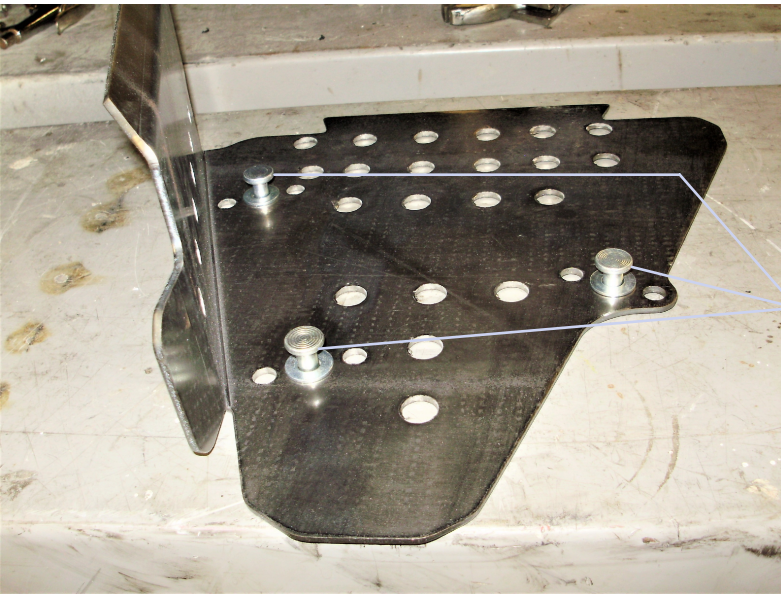
6=1/4X1/2 U-BOLTS  
12=1/4 LOCK NUTS  
6= ALUM/ RIVETS  
6=5/16 SAE WASHERS



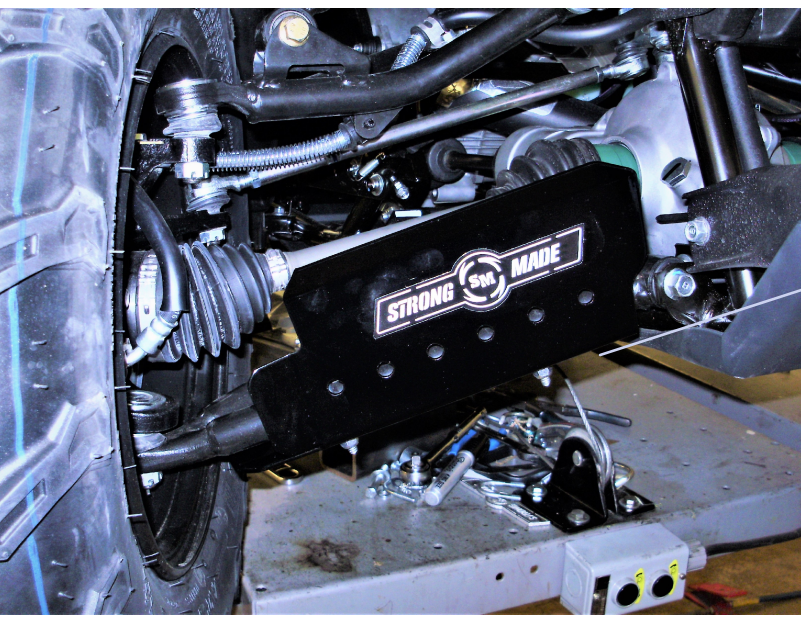
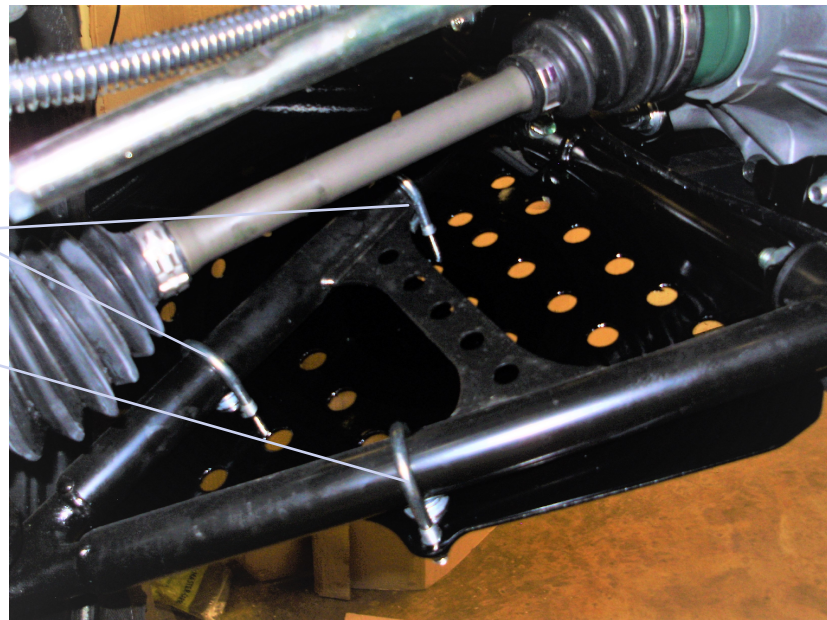
## #SS245H

YAMAHA KODIAK 450 FRONT GUARDS

FIRST PLACE THE GUARD ON A FLAT TABLE. INSTALL THE THREE RIVETS WITH THE 5/16 SAE WASHERS INTO THE CENTER HOLE ON THE THREE MOUNTING LOCATIONS. THESE ARE USED AS SPACERS OFF THE CONTROL ARMS ONCE MOUNTED.



NEXT YOU CAN PLACE THE GUARD UNDER THE ARM. SLIDE UPWARDS TOWARD THE FRAME AND AND INSERT THE U-BOLTS ONE AT A TIME. HAND TIGHTEN ALL LOCK NUTS UNTIL ALL HARDWARE IS ON. THEN PROCEED TO TIGHTEN ALL THE LOCK NUTS EVENLY. DO NOT OVER TIGHTEN THE HARDWARE.



ONCE MOUNTED LIFT THE ATV OFF THE GROUND WITH A JACK TURN THE WHEELS FROM LEFT TO RIGHT TO MAKE SURE THE BRAKE OR BRAKE LINES WILL TOUCH ANY PART OF THE GUARDS. THIS IS A PIC OF THE RIGHT SIDE SITTING ON THE ATV.