

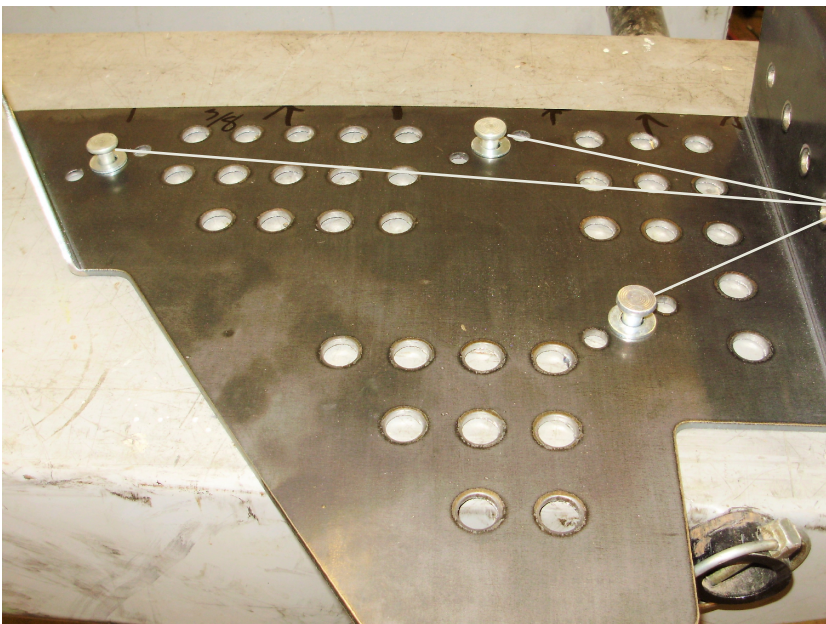
6=1/4X3/4 U-BOLTS
12=1/4 LOCK NUTS
6=ALUM RIVETS
6=5/16 SAE WASHERS



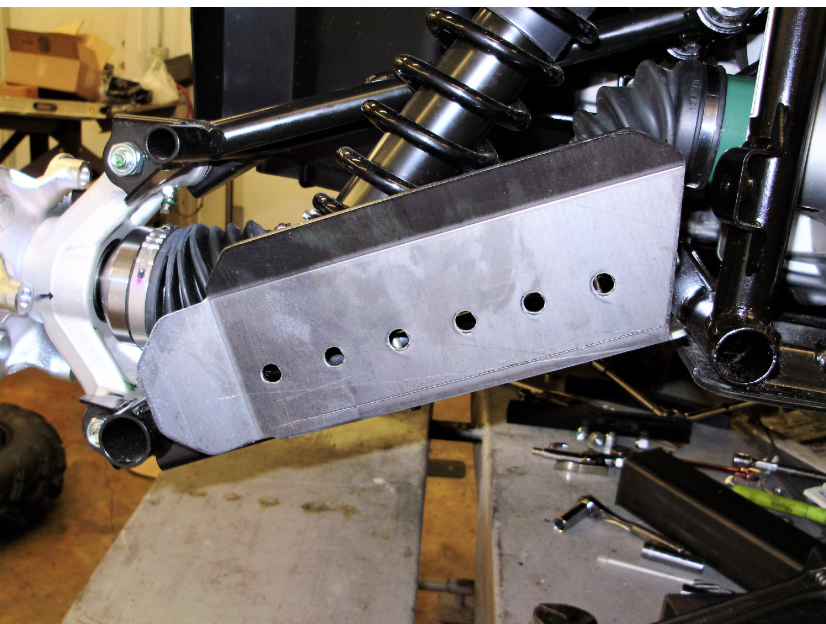
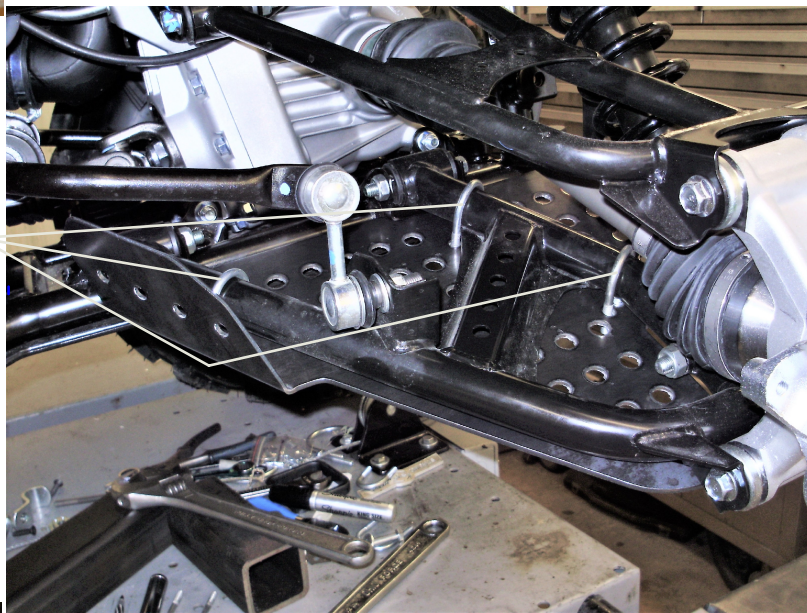
SS246H

YAMAHA KODIAK REAR GUARDS

FIRST PLACE THE GUARD ON A FLAT AREA. PLACE THE RIVETS AND WASHERS INTO THE MIDDLE HOLES OF THE THREE MOUNTING POSITIONS. THESE ARE USED AS SPACERS ONCE MOUNTED TO THE LOWER CONTROL ARM.



ONCE THE RIVETS AND WASHERS ARE IN PLACE. PLACE THE GUARD UNDER THE LOWER CONTROL ARM AND INSERT ONE U-BOLT AT A TIME. THREAD THE LOCK NUTS ON HAND TIGHT UNTIL ALL ARE IN PLACE. THEN PROCEED TO TIGHTEN ALL LOCK NUTS EVENLY DO NOT OVER TORQUE THE NUTS.



FINISHED PICTURE OF THE GUARD ONCE MOUNTED TO THE ATV. THIS IS THE LEFT REAR. ONCE MOUNTED MAKE A SHORT RIDE AND CHECK THE GUARD AND WHEELS TO MAKE SURE NOTHING IS TOUCHING OR RUBBING FROM THE TRAVEL OF THE SUSPENSION.