

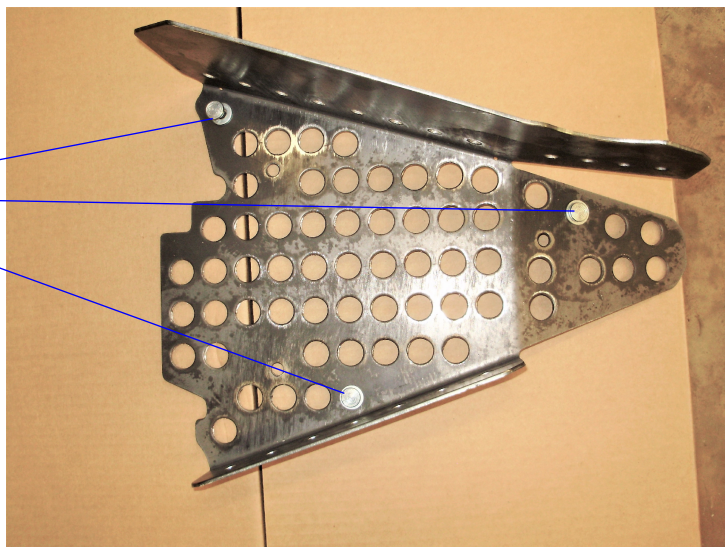
6=SPACER #12
6=6MMX25MM BOLTS
6=RIVETS
6=5/16 SAE WASHERS
6=1/4 USS WASHERS



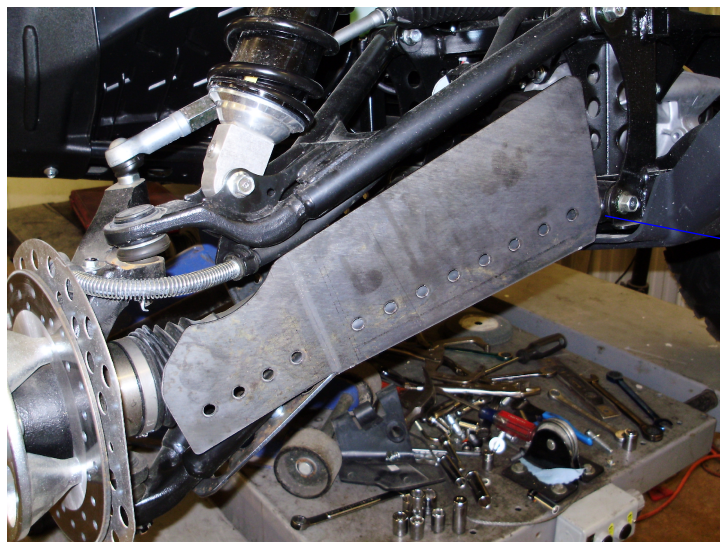
SS247H

FRONT GUARDS YAMAHA WOLVERINE 700 SXS X4

PLACE RIVETS WITH WASHERS INTO THESE SMALL HOLES ON THE INSIDE OF GUARD. THESE ARE USED AS SPACERS ONCE INSTALLED.



PLACE THE GUARD UNDER THE ARM LINE THE HOLES UP WITH THE THREADED TABS. USE THE 6MM BOLTS WITH 1/4 USS WASHERS TO THREAD INTO THE WELDED NUTS ON THE ARM.



MAKE SURE TO PLACE THE SPACERS BETWEEN THE TABS AND GUARD ON ALL BOLTS BEFORE TIGHTENING ALL HARDWARE.



ONCE BOTH GUARDS HAVE BEEN MOUNTED LIFT THE FRONT OF THE MACHINE OFF THE GROUND. TURN THE WHEELS MAKE SURE NOTHING IS RUBBING OR TOUCHING BEFORE OPERATING THE MACHINE.