



- 6=1/4X2 1/2 BOLTS
- 8=5/16X3/4 BOLTS
- 2=5/16X1 BOLTS
- 8=5/16 NUTS
- 6=1/4 NUTS
- 6=1/4 LOCK WASHERS
- 8=5/16 LOCK WASHERS
- 18=1/4 WASHERS
- 2=3/16X1 WASHERS 7/16 HOLE

EL

THIS PLATE IS DESIGNED TO FIT THE RAMESY 2500LB AND ALSO THE WARN 2000LB , 2500LB WINCHES. RAMSEY'S WINCH IS SUPPLIED WITH A ROLLER FAIRLEAD. THE WARN WILL COME WITH A HAWSE FAIRLEAD. THIS DEPENDS ON THE WINCH THAT IS PURCHASED. BOTH THE ROLLER OR HAUS FAIRLEAD WILL MOUNT IN THAT SPECIFIC POSITION.

IF THE HAWSE FAIRLEAD FROM WARN IS USED IN PLACE OF THE ROLLER FAIRLEAD USE THE BOLTS AND NUTS THAT OR ON THE HAWSE.

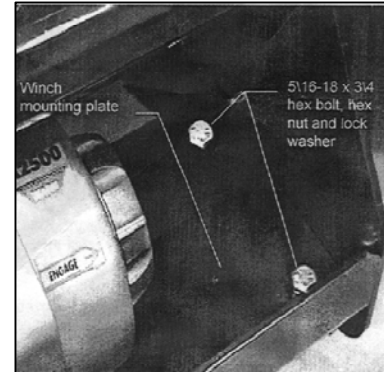
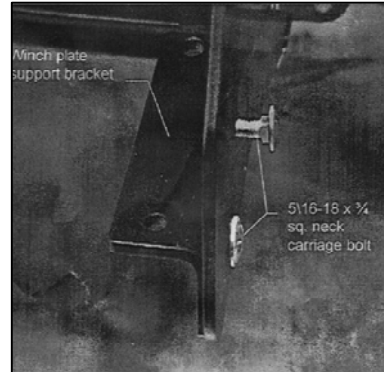
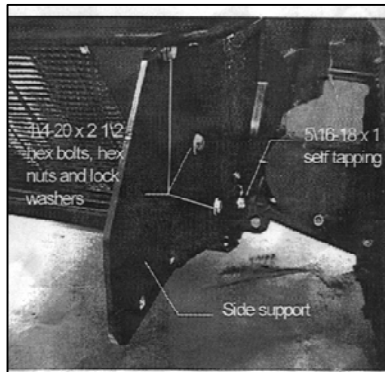
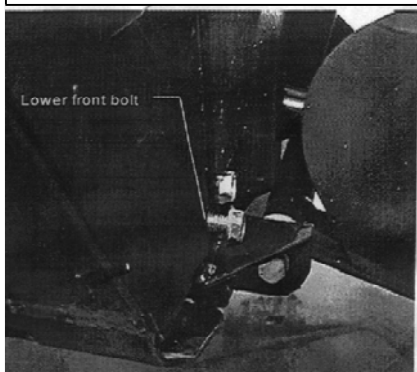
298024-R46
POLARIS RANGER 6X6

FIGURE 1

FIGURE 2

FIGURE 3

FIGURE 4



1. REMOVE THE LOWER FRONT BOLT THAT ATTACHES THE FRONT GRILL ASSEMBLY TO THE LOWER FRAME ENDS,SEE FIGURE ONE.

2. ATTACH THE SIDE SUPPORT TO THE SIDE OF THE FRONT GRILL ASSEMBLY, SEE FIGURE TWO. USE THE 5/16X1 BOLTS TO ATTACH THE SIDE SUPPORT AT THE BOTTOM WERE THE BOLTS WAS REMOVED IN THE STEP ONE. USE THE 1/4X2 1/2 BOLTS NUTS AND LOCK WASHERS TO ATTACH ALONG EACH SIDE. NOTE THAT THE 3/16 WASHERS MAY BE USED AS SPACERS BETWEEN THE SIDE SUPPORT AND THE SIDE GRILL RAIL.

3. ATTACH THE WINCH PLATE SUPPORT BRACKET TO THE SIDE SUPPORT SEE FIGURE THREE. USE THE 5/16X3/4 BOLTS NUTS AND WASHERS.

4. PLACE THE MOUNTING PLATE INTO POSITION ON THE SUPPORT BRACKETS AND ATTACH WITH THE 5/16X3/4 BOLTS LOCK WASHERS AND NUTS SEE FIGURE 4.

5. TIGHTEN ALL FASTENERS AT THIS TIME. THEN MOUNT THE WINCH TO THE PLATE USING THE HARDWARE THAT COME WITH THE WINCH. MOUNT THE ROLLER FAIRLEAD TO THE PLATE WERE THE FRONT OF THE PLATE IS BENT UP. USE THE BOLTS THAT COME WITH THE ROLLER FAIRLEAD.