

4=1/4X1/2 U-BOLTS
8=1/4 NUTS
8=1/4 LOCK WASHERS



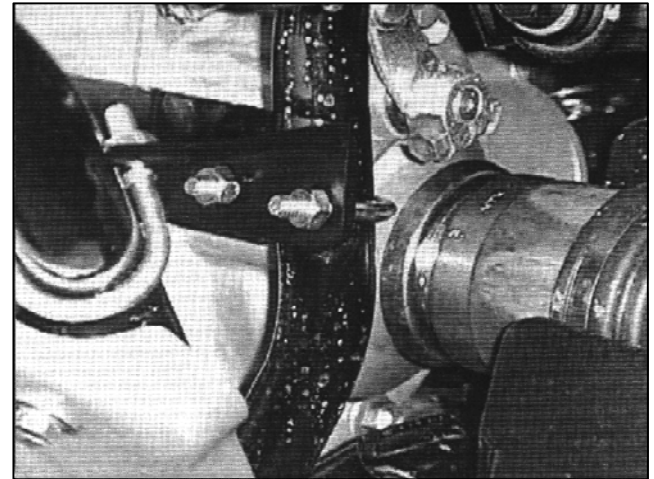
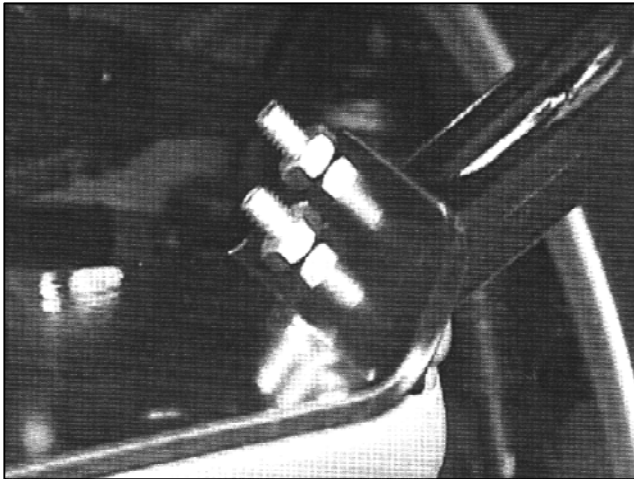
THIS PLATE IS DESIGNED TO FIT THE RAMSEY 2500LB AND ALSO THE WARN 2000LB , 2500LB WINCHES. RAMSEY'S WINCH IS SUPPLIED WITH A ROLLER FAIRLEAD. THE WARN WILL COME WITH A HAWSE FAIRLEAD. THIS DEPENDS ON THE WINCH THAT IS PURCHASED. BOTH THE ROLLER OR HAWSE FAIRLEAD WILL MOUNT IN THAT SPECIFIC POSITION.

IF THE HAWSE FAIRLEAD FROM WARN IS USED IN PLACE OF THE ROLLER FAIRLEAD USE THE BOLTS AND NUTS THAT OR ON THE HAWSE.

298032-R49

SUZUKI QUAD RUNNER 500 4X4

SUZUKI QUAD MASTER 500 4X4,2X4



1. MAY BE EASIER TO INSTALL IF THE ALUM. SKID PAN IS REMOVED, ONCE IT IS REMOVED PUT THE WINCH IN THE CAVITY THEN SLIDE THE WINCH PLATE INTO POSITION. (DO NOT BOLT THE WINCH TO THE PLATE YET).
2. PLACE THE 1/4 U-BOLTS INTO POSITION AROUND THE FRAME AND THE FRAME TUBES AND INTO THE MOUNTING BRACKET. TIGHTEN WITH THE 1/4 NUTS AND LOCK WASHERS.
3. ATTACH THE ROLLERFAIRLEAD TO THE TABS THAT ARE BENT UP IN THE FRONT OF THE PLATE WITH THE HARDWARE IN THE WINCH , THIS HARDWARE HAS THE BOLTS TO INSTALL THE WINCH ALSO.
4. REPLACE THE ALUM. SKID PAN ONCE THE PROCESS IS FINISHED.