

4=1/4X1/2 U-BOLTS

8=1/4 LOCK WASHERS

8=1/4 NUTS

2=8MMX40MMX1.25 BOLTS

2=1/4X7/8 GALV. PIPE

2=5/16X1 BOLTS

2=5/16 NUTS

4=5/16 LOCK WASHERS

IF THE WARN RT25 IS USED MUST USE THE METRIC BOLTS THAT ARE SUPPLIED WITH THE HARDWARE IN THE BAG WITH THE WINCH. THESE BOLTS ARE USED TO MOUNT THE WINCH TO THE PLATE.

IF THE HAWSE FAIRLEAD FROM WARN IS USED IN PLACE OF THE ROLLER FAIRLEAD USE THE BOLTS AND NUTS THAT OR ON THE HAWSE.



THIS PLATE IS DESIGNED TO FIT THE RAMSEY 2500LB AND ALSO THE WARN 2000LB , 2500LB WINCHES. RAMSEY'S WINCH IS SUPPLIED WITH A ROLLER FAIRLEAD. THE WARN WILL COME WITH A HAWSE FAIRLEAD. THIS DEPENDS ON THE WINCH THAT IS PURCHASED. BOTH THE ROLLER OR HAWSE FAIRLEAD WILL MOUNT IN THAT SPECIFIC POSITION.

298038-R51

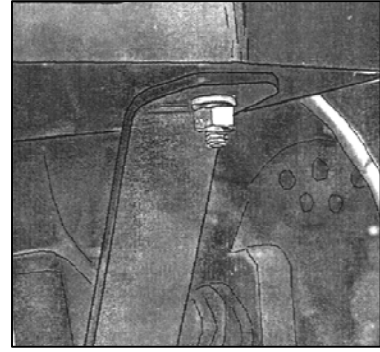
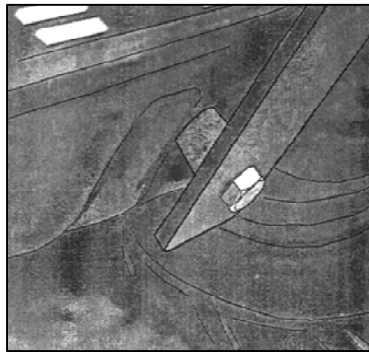
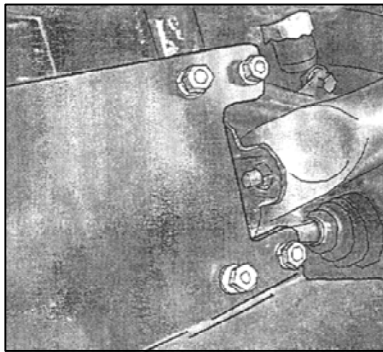
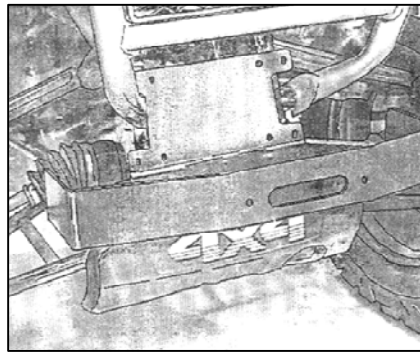
YAMAHA WOLERINE 400 2X4 4X4

FIGURE 1

FIGURE 2

FIGURE 3

FIGURE 4



1. PLACE THE WINCH PLATE INTO POSITION ON THE TWO FRAME TUBES SEE FIGURE1. PLACE THE U-BOLTS AROUND THE FRAME TUBES AND THROUGH THE MOUNTING PLATE AS SHOWN IN FIGURE2. ATTACH THE MOUNTING PLATE WITH EIGHT 1/4 HEX NUTS AND LOCK WASHERS. ONLY TIGHTEN FINGER TIGHT AT THIS TIME.

2. REMOVE THE TWO LOWER BOLTS THAT HOLD ON THE SKID PAN. ATTACH THE SUPPORT STRAPS WHERE THE SKID PAN BOLTS WERE REMOVED. ATTACH WITH THE TWO 8MMX1.25 BOLTS AND SPACERS SEE FIGURE 3.

3. ATTACH THE TOP OF THE SUPPORTS STRAP ON TO THE MOUNTING PLATE WITH THE TWO 5/16 BOLTS NUTS AND WASHERS SEE FIGURE 4.

4. PLACE THE WINCH IN TO POSITION IN THE MOUNTING TRAY. THE WINCH MOTOR WILL BE ON THE RIGHT SIDE OF THE ATV WITH THE DRUM ROTATION LABEL ON THE WINCH FACING FORWARD. FASTEN WINCH TO MOUNTING PLATE USING FOUR 5/16 BOLTS SUPPLIED WITH THE WINCH.

5. ATTACH THE ROLLER FAIRLEAD TO THE FRONT OF THE PLATE OVER THE OVAL HOLE. USE THE BOLTS THAT COME WITH THE WINCH.