

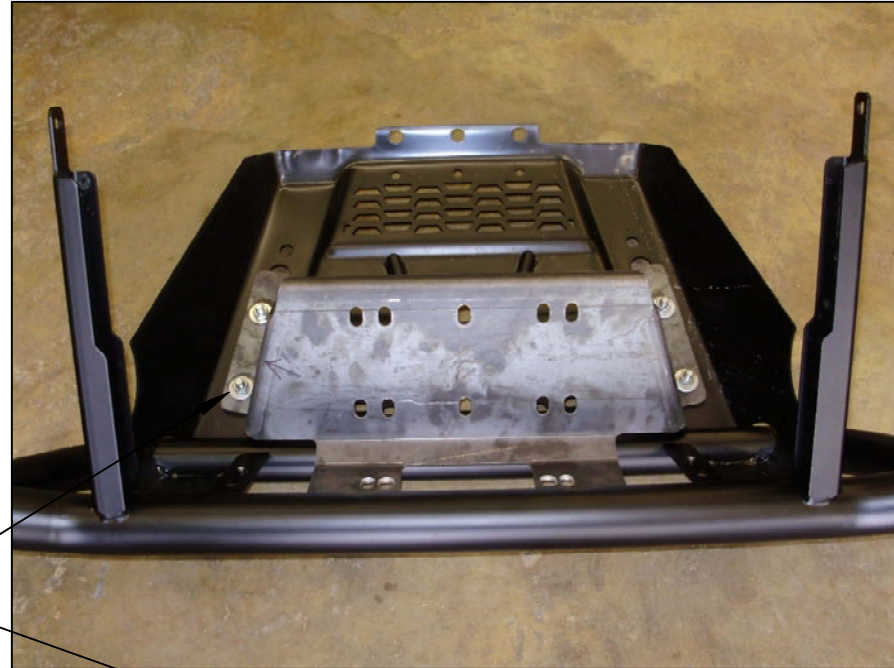
4=5/16 LOCK NUTS-A
4=5/16 X 1 BOLTS-B
8=5/16 USS WASHERS-C



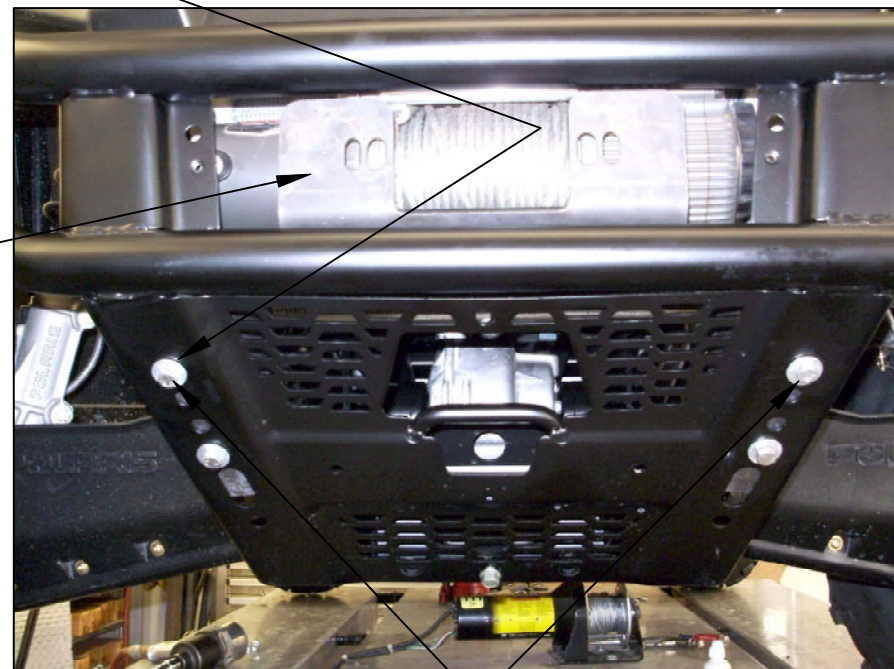
#298145-R126 POLARIS RANGER 400 2010

REMOVE THE FRONT BUMPER
PLACE THE PLATE ONTO THE
INSIDE OF THE BUMPER.
MOUNT THE PLATE TO THE
BUMPER USING THE SUPPLIED
HARDWARE. MUST USE THE
TOP HOLES. ALSO MOUNT THE
WINCH ONTO THE PLATE
BEFORE INSTALLING THE
BUMPER BACK ONTO THE
FRAME OF THE UNIT.

USE A WASHER ON THE
FRONT AND REAR OF THE
PLATE.



THIS IS HOW IT WILL LOOK
ONCE MOUNTED PROPERLY.
THEN PROCEED TO MOUNT
THE ROLLER FAIRLEAD TO
THE FRONT OF THE BRACKET.



THESE ARE THE TOP
HOLES ON THE BUMPER.